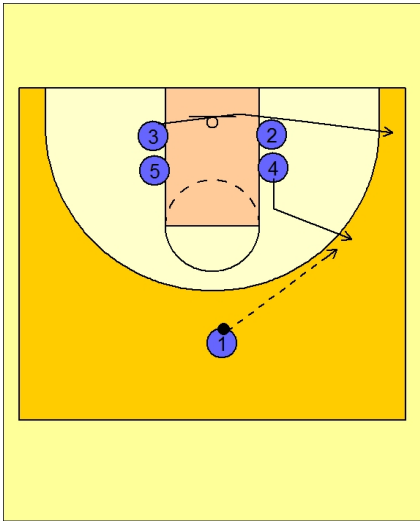




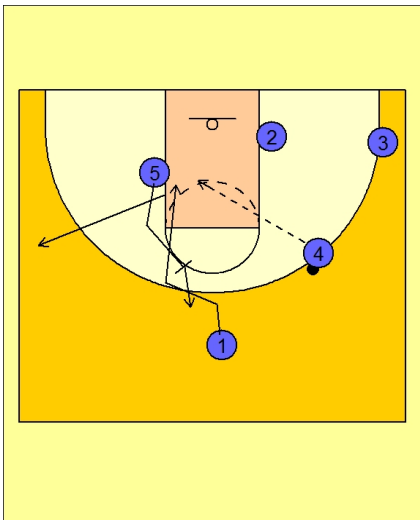
### Set play vs. man (30)



#### Butler Set Play Vs. Man Defense

Low stack set to begin.

#3 cuts out to the right corner while #4 slides up and out to receive the entry pass from #1.



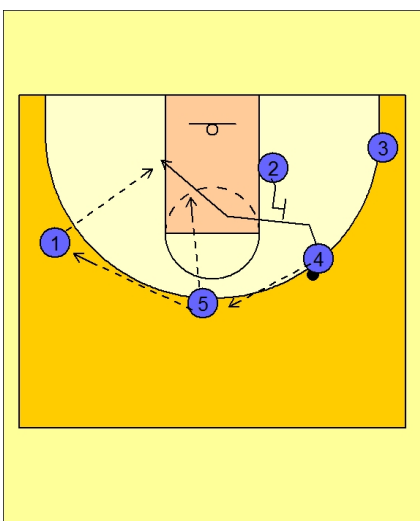
#### Butler Set Play Vs. Man Defense

As soon as #1 gives up the ball, #5 is setting a back screen for #1.

#1 cuts to the rim looking for the lob pass from #4.

If #1 does not get the ball, #1 will cut out to the left wing.

#5 sets the back screen and then steps out on top.



#### Butler Set Play Vs. Man Defense

#4 passes the ball to #5 on top who then passes to #1 on the left wing.

#4 cuts off the back screen from #2.



**Butler Set Play Vs. Man Defense**

#2 then steps out to the corner while #3 cuts up off the down screen from #5.

