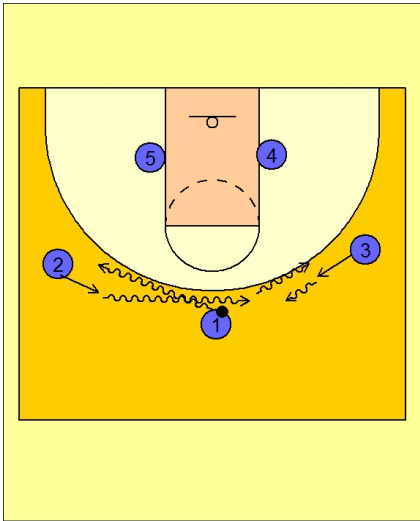


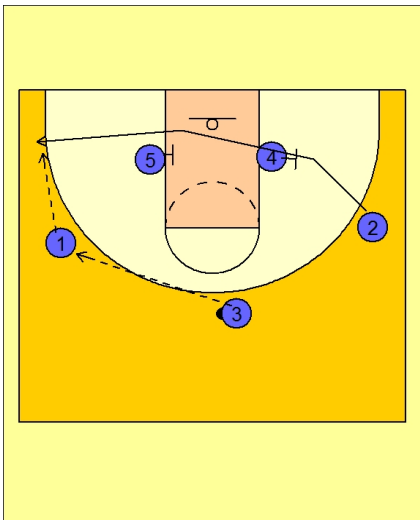


Set play vs. man (31)



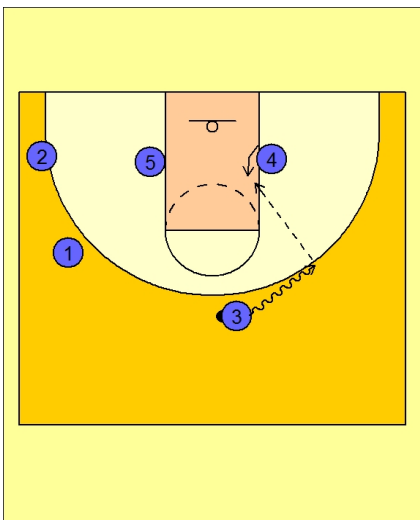
Butler Set Play Vs. Man Defense

- #1 starts the dribble weave by dribbling at #2 on the left wing.
- #2 takes the handoff and dribbles up to the top.
- #2 now takes the ball to the right wing and #3.
- #3 takes the hand-off from #2. #3 brings the ball to the middle of the floor.



Butler Set Play Vs. Man Defense

- Once #2 gives up the ball, he will cut to the left corner using staggered screens from #4 and #5.
- #3 passes to #1 who looks to hit #2 in the corner.



Butler Set Play Vs. Man Defense

- #3 also has the option to take the ball back to the right side and look to isolate #4 in the low post.