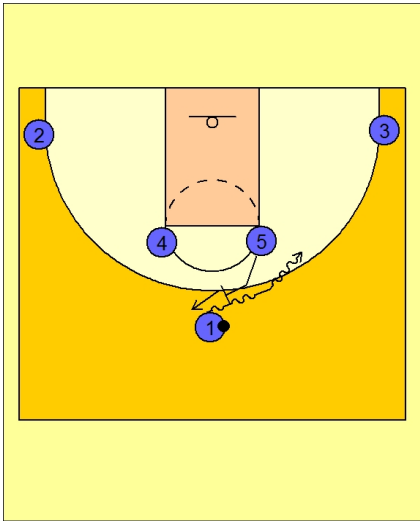




Set play vs. man (32)

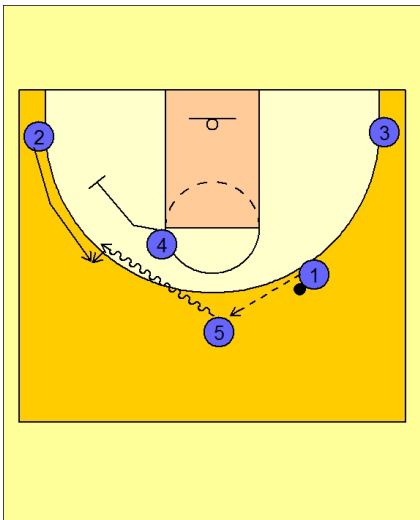


Butler Set Play Vs. Man Defense

Horns set to begin.

#5 steps out and ball screens for #1. #1 drives the ball off the ball screen to the right.

#5 pops out on top after screening.

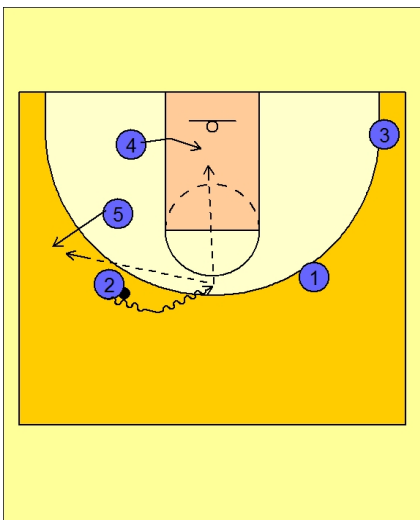


Butler Set Play Vs. Man Defense

#1 passes the ball to #5 on top.

#4 screens away for #2 while #5 drives the ball toward #2.

#2 takes the hand-off from #5.



Butler Set Play Vs. Man Defense

#2 takes the ball and looks to score or dump the ball inside to #4 or to #5 popping out after the hand-off.