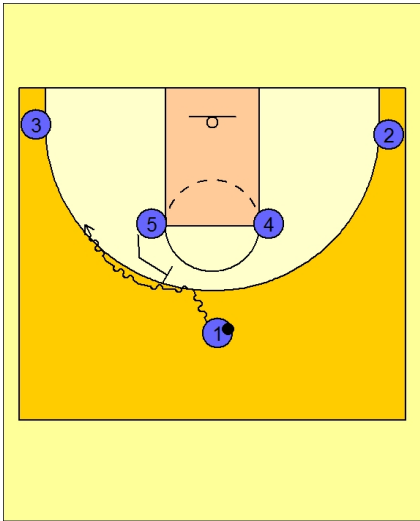




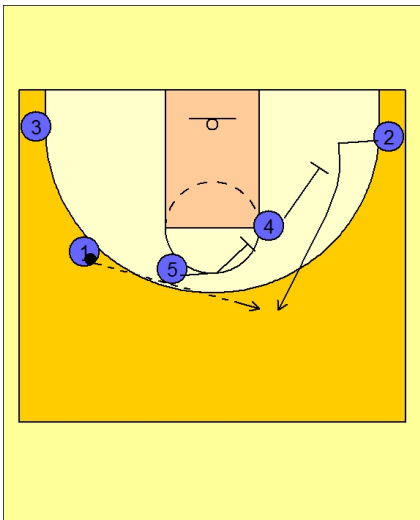
Set play vs. man (35)



Butler Set Play Vs. Man Defense

Horns set again to begin.

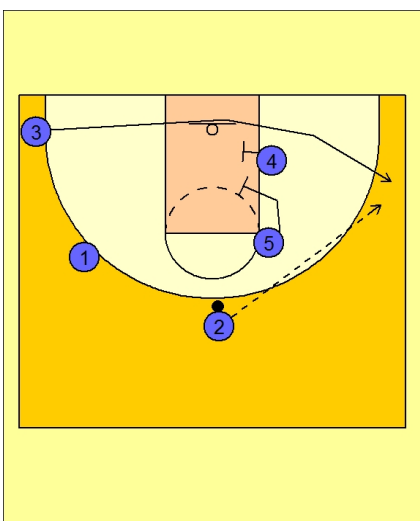
#1 drives off the ball screen from #5 stepping out.



Butler Set Play Vs. Man Defense

#5 and #4 now set a double staggered screen for #2 in the opposite corner.

#1 passes to #2 on top for the open jump shot.



Butler Set Play Vs. Man Defense

If #2 does not have a shot, #3 is now cutting hard off the double screen on the right low block from #4 and #5.