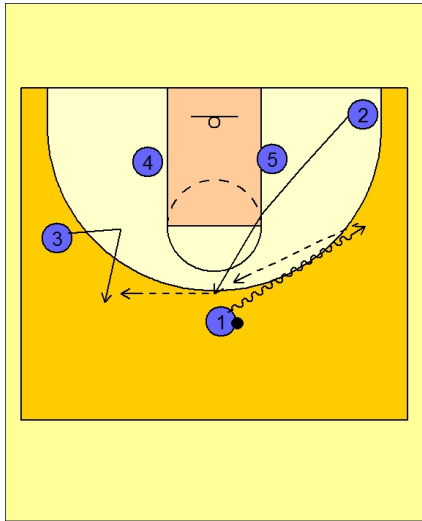




Set play vs. man (36)

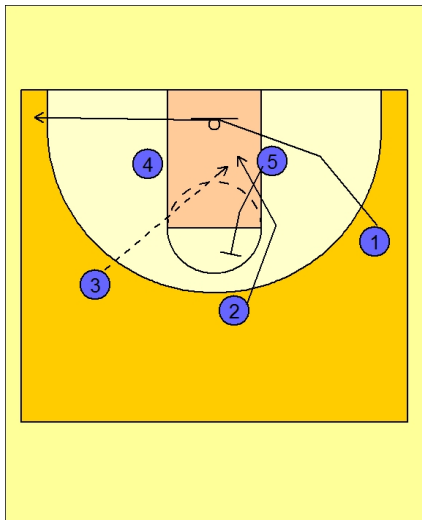


Butler Set Play Vs. Man Defense

#1 takes the ball to the right wing area.

#2 cuts up to the top of the floor.

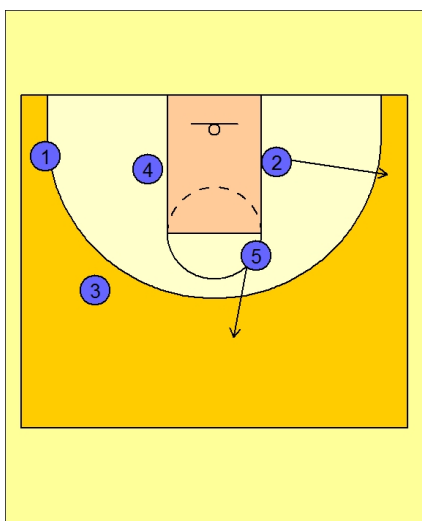
#1 passes to #2. #3 sets up his defender to get the next pass from #2.



Butler Set Play Vs. Man Defense

As soon as #1 passed the ball to #2 on top, he cuts through to the opposite corner area.

As soon as #2 passed the ball to #3, #5 sets a back screen and #2 cuts to the rim looking for the lob pass from #3.



Butler Set Play Vs. Man Defense

If the lob is not there, #5 pops out and #2 pops out to the wing area.



Butler Set Play Vs. Man Defense

#5 now ball screens for #3 on top. If #5 is a post player, he will roll to the rim. If he has perimeter shooting skills he could also pick and pop on this screen.

If #5 rolls, #4 takes his defender out of the lane and slides up to the top.

