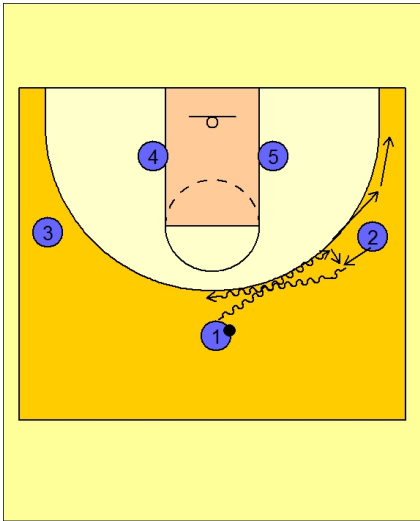




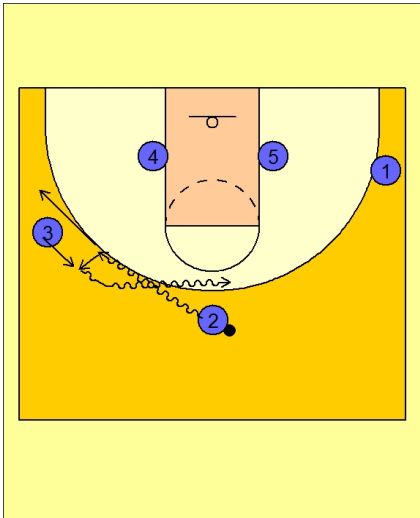
Set play vs. man (37)



Butler Set Play Vs. Man Defense

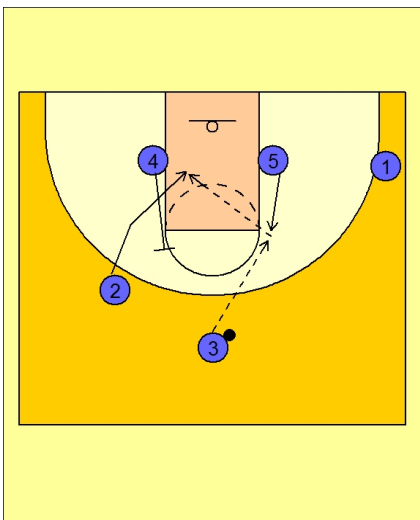
#1 and #2 executes a dribble hand-off. #1 cuts to the corner after handing off to #2.

#2 drives the ball to the top of the key.



Butler Set Play Vs. Man Defense

#2 now executes a dribble hand-off with #3 on the left wing.



Butler Set Play Vs. Man Defense

#3 takes the ball to the top and enters the ball to #5 cutting up to the elbow.

#2 then uses a back screen from #4. #5 looks to make the pass to #2 if he is open.



Butler Set Play Vs. Man Defense

If #2 is not open, #4 pops out and #5 makes the pass out and they they are into their ball screen offense.

