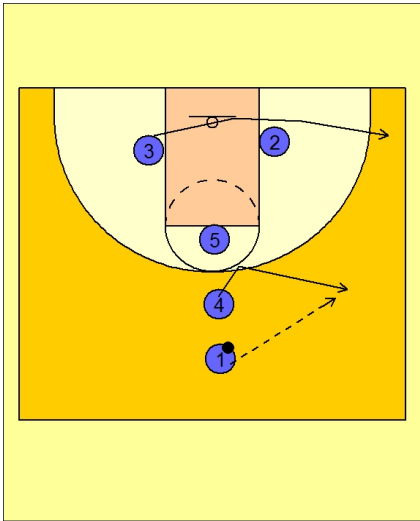




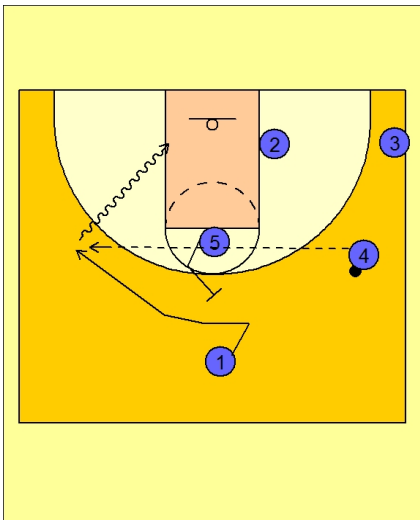
### Set play vs. man 4



#### Butler Set Play vs. Man Defense

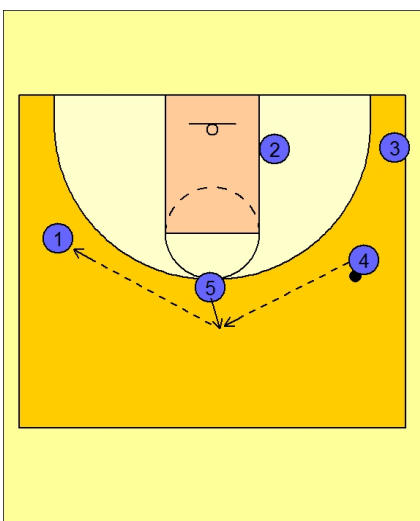
#4 breaks out to the right top area to receive the entry pass from #1.

#3 cuts to the ball side corner area.



#### Butler Set Play vs. Man Defense

#5 sets a flare screen for #1 who cuts to the back side of the floor. #1 will look to catch and score if open.



#### Butler Set Play vs. Man Defense

If #1 is not open, #5 steps out and #4 passes to #5 on top who then passes to #1 on the left wing.

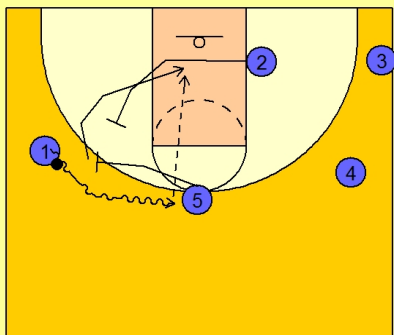


### **Butler Set Play vs. Man Defense**

Once #1 has the ball, #5 comes over to ball screen.

#1 drives the ball off the ball screen while #2 slides up and back screens #5's defender.

#1 looks inside to #5 rolling off the screen and using the back screen from #2.



### **Butler Set Play vs. Man Defense**

If #5 is not open, #2 pops out after the back screen and receives the pass from #1.

#5 will post up on the ball side low block and look to catch the post entry pass from #2.

