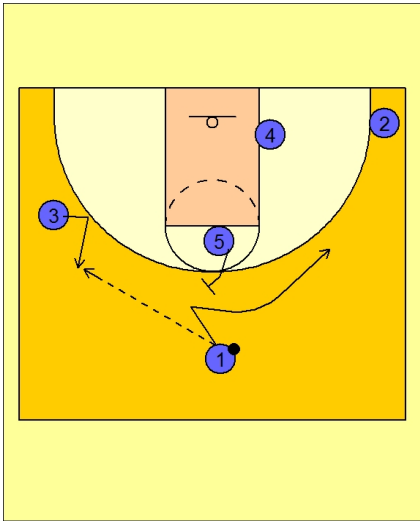




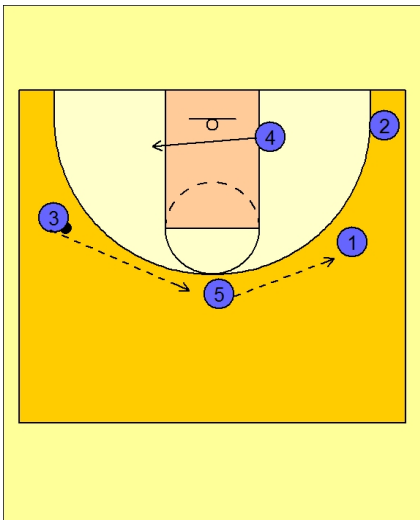
## Set play vs. man 6



### Butler Set Play vs. Man Defense

#1 passes to #3 on the left side of the floor.

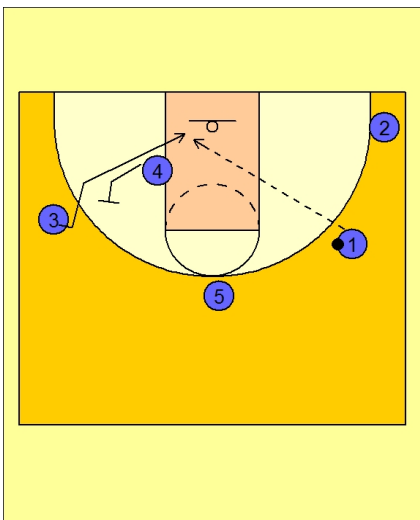
#5 sets a flare screen for #1 after the pass.



### Butler Set Play vs. Man Defense

#3 now reverses the ball to #5 on top who passes to #1 on the right side of the floor.

#4 cuts to the opposite low block area away from the ball.



### Butler Set Play vs. Man Defense

On the pass from #5 to #1, #4 sets a back screen for #3.

#3 looks for the lob pass at the rim from #1.



**Butler Set Play vs. Man Defense**

If #3 does not get the ball, #5 down screens for #4.

#4 looks for the open jump shot on top.

