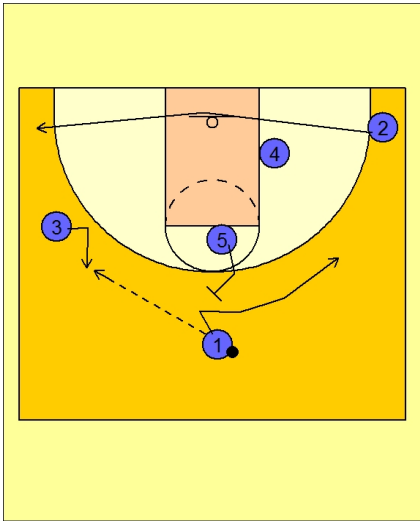




### Set play vs. man 7



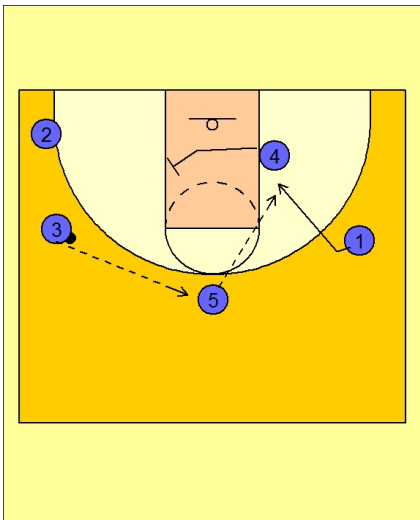
#### Butler Set Play vs. Man Defense

#1 passes to #3 on the left wing.

#2 cuts to the ball side corner area.

#5 flare screens for #1.

#1 cuts over the top to the right side of the floor.

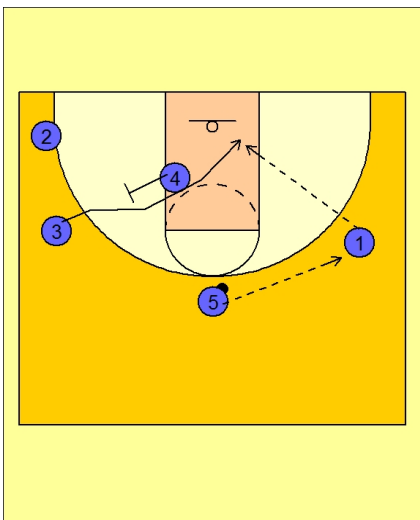


#### Butler Set Play vs. Man Defense

#5 steps out after screening and receives the next pass from #3.

#4 now starts to set a back screen for #3.

If #1 is feels pressure, he will make a back cut for the lay-up.



#### Butler Set Play vs. Man Defense

If the back cut is not available, #5 will pass to #1 on the right wing area.

#4 back screens for #3.

#1 looks to pass inside to #3.



**Butler Set Play vs. Man Defense**

#5 now "picks the picker" and sets a down screen in the lane for #4.

#1 will pass to #4 on top for the open jump shot.

