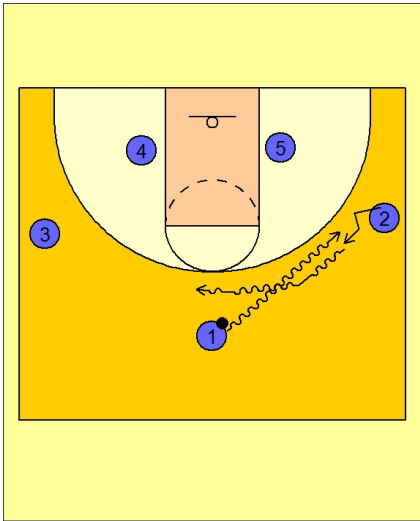




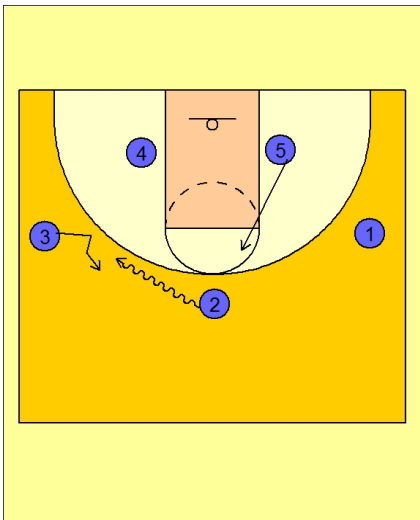
Set play vs. man 8



Butler Set Play vs. Man Defense

#1 drives the ball at the wing player #2.

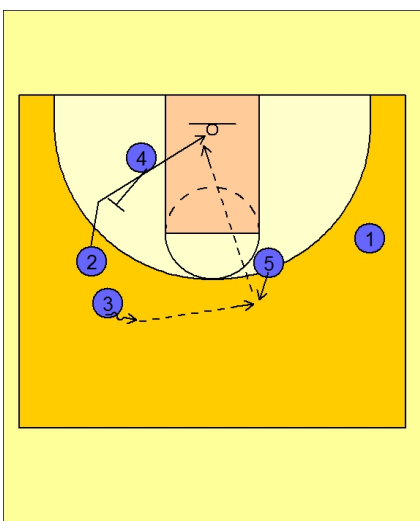
#2 takes the hand-off from #1 and drives the ball to the top of the floor.



Butler Set Play vs. Man Defense

#2 now drives the ball at #3 on the left wing.

As #2 is driving the ball at #3, #5 is flashing to the high post area.



Butler Set Play vs. Man Defense

#3 takes the hand off from #2 and then passes to #5 on top.

#2, right after handing off to #3, uses a back screen from #4.

#5 looks to hit #2 cutting to the basket.