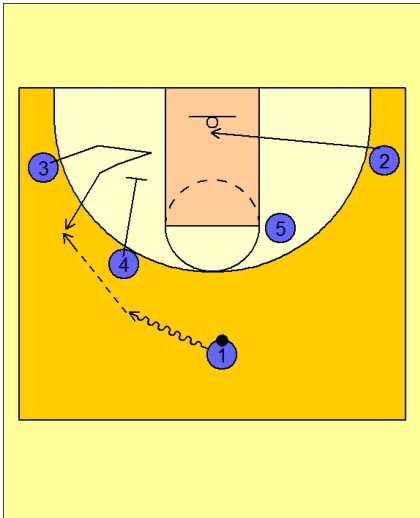




Set play vs. man 9

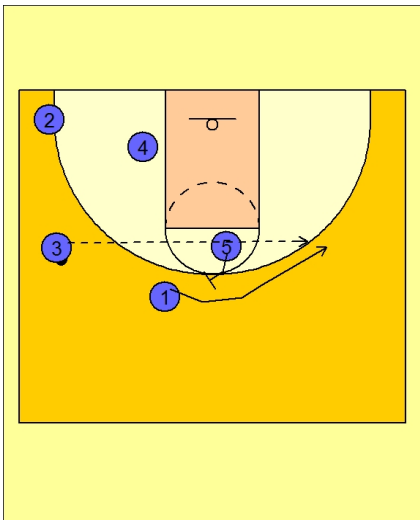


Butler Set Play vs. Man Defense

#1 drives the ball to the left side of the floor while #4 sets a down screen for #3.

#2 cuts under the rim.

#1 enters the ball to #3 on the left wing.

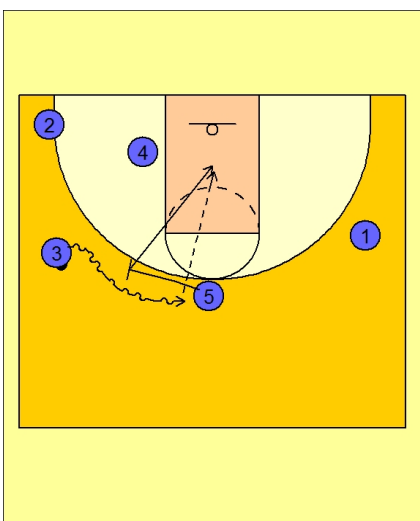


Butler Set Play vs. Man Defense

#5 now sets a flare screen for #1.

#1 cuts over the screen to the right side of the floor.

#3 looks to pass if #1 is open.



Butler Set Play vs. Man Defense

If #1 is not open, #5 sets a ball screen for #3.

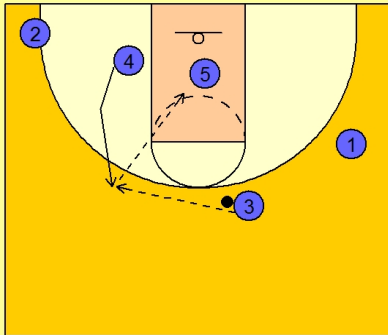
#3 drives the ball over the ball screen and looks to score or dump the ball off to #5 rolling to the basket.



Butler Set Play vs. Man Defense

#4 is cutting up to the top as #5 is rolling to the basket.

#3 will look to pass back to #4 who can shoot or dump the ball inside to #5 sealing in the lane.



Butler Set Play vs. Man Defense

As noted on a previous quick hitter, #3 also has the option to drive the ball at #4's defender in the lane with #4 cutting in behind the ball looking for the pass back out and the open 3 point shot.

