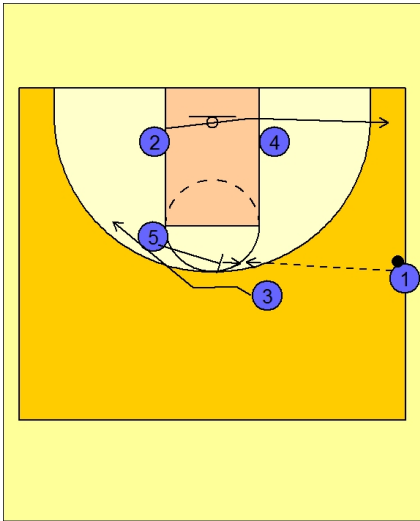




Sideout 1

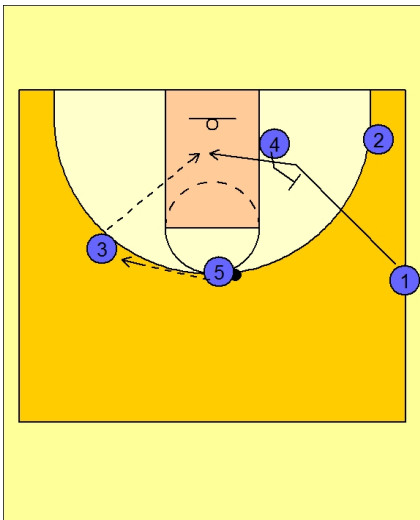


Butler Side-Out

Play starts with #2 cutting to the ball side corner while #5 back screens for #3.

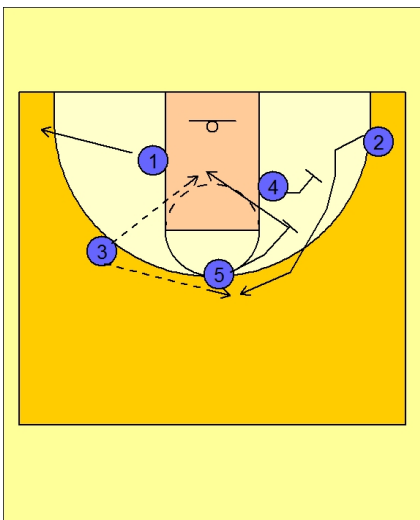
If they are fronting #4, #1 could look to make a lob pass inside to #4, since the back side help was taken away by #2's cut to the ball side corner.

#1 now passes to #5 stepping to the ball after back screening for #3.



Butler Side-Out

#5 reverses the ball to #3 on the left wing while #1 cuts in and uses a back screen from #4.

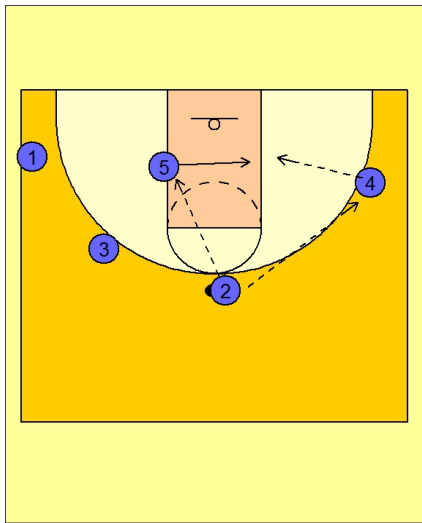


Butler Side-Out

If #1 does not get the ball he continues his cut to the ball side corner.

#4 and #5 now set a double staggered screen for #2 in the right corner.

As soon as #2 cuts off the screen from #5, he rolls in the middle of the lane looking for the pass from #3.



Butler Side-Out

#2 now looks to pass inside to #5 sealing in the lane. If #5 is not open, he will pass the ball to #4 on the right wing who will then look to feed the ball inside to #5.