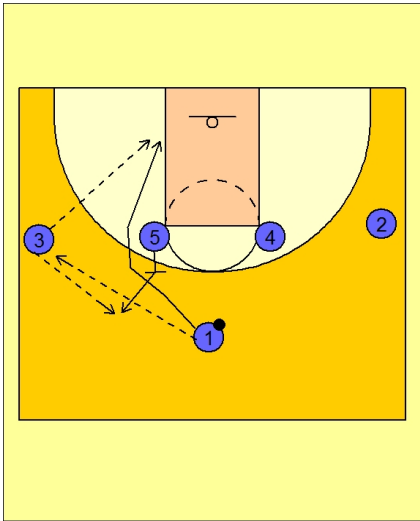




Set play vs. man (11)



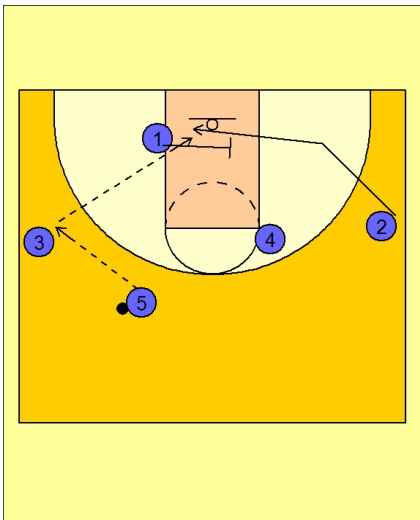
California Set Play vs. Man

#1 - 4 high to begin.

#1 enters the ball to #3 on the left wing.

#5 back screens for #1 who makes the famed "UCLA Cut" to the basket.

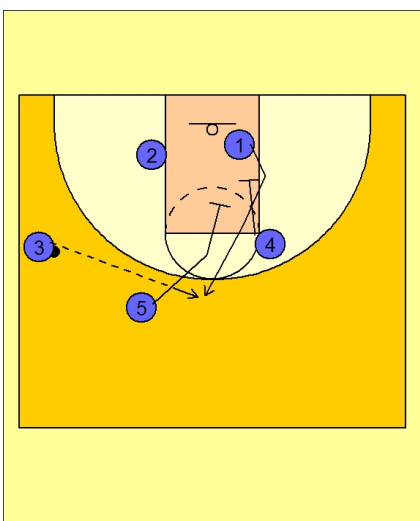
#3 first looks to #1 cutting. #5 steps out after screening and receives the pass from #3.



California Set Play vs. Man

#1 continues his cut into the lane and screens for #2 on the opposite wing cutting through the lane.

#5 passes back to #3 who looks to post up #2.



California Set Play vs. Man

If #2 does not get the ball, #3 has the option to pass the ball to #1 cutting up off the double screen from #5 and #4.