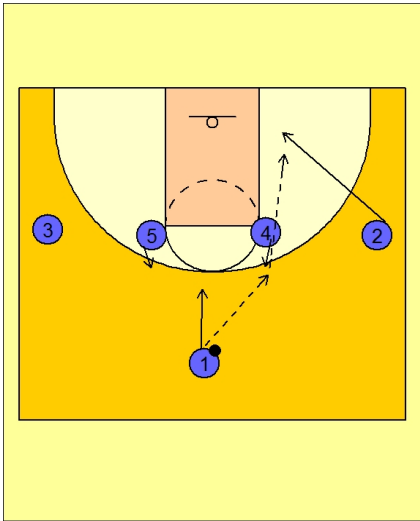




Set play vs. man (6)

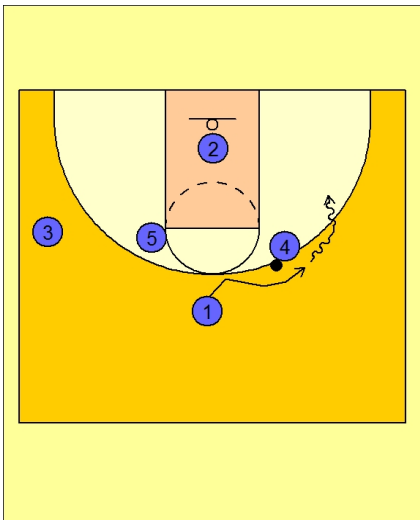


California Set Play vs. Man

Montgomery and Cal like to use a lot of 1-4 high and low sets to start their offense.

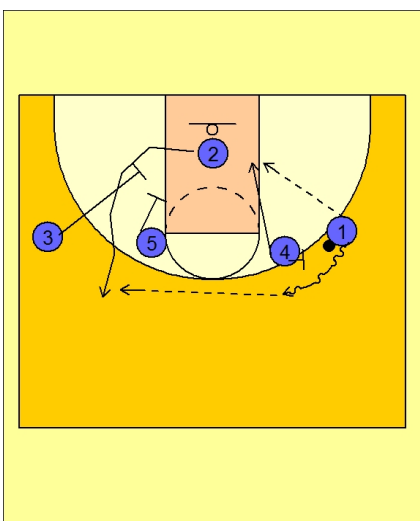
Here we see the 1-4 high with the point guard #1 entering the ball to #4 with #2 looking for the quick hitting back door cut.

#1 starts to take his man down a bit after the pass to #4.



California Set Play vs. Man

If #2 does not get the back door, #1 comes off #4 tight looking for the hand-off and the opportunity to score or attack the rim.



California Set Play vs. Man

If #1 does not have a shot, #4 may roll to the basket and post up or may set a ball screen for #1 on the right wing.

While this is happening, #5 and #3 are setting a double screen for the shooter, #2.