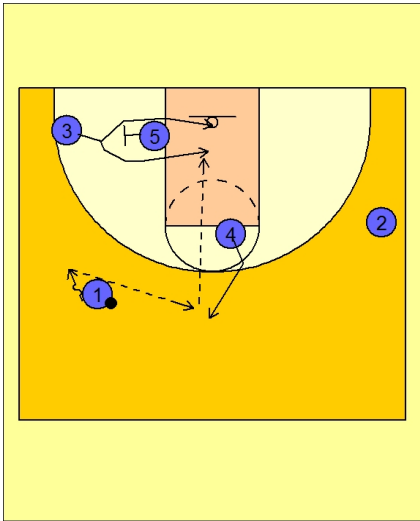




Set play vs. man (7)



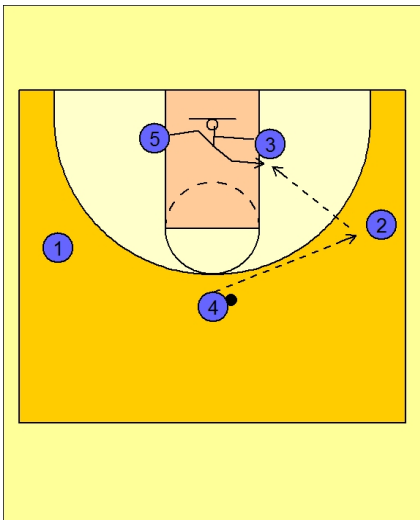
California Set Play vs. Man

#1 takes the ball to the left wing area.

As this happens, #4 breaks out quickly to receive the entry pass from #1.

As #4 catches the ball, #3 uses a screen from #5 and cuts into the lane.

#4 will look to make the pass to #3 if he is open.

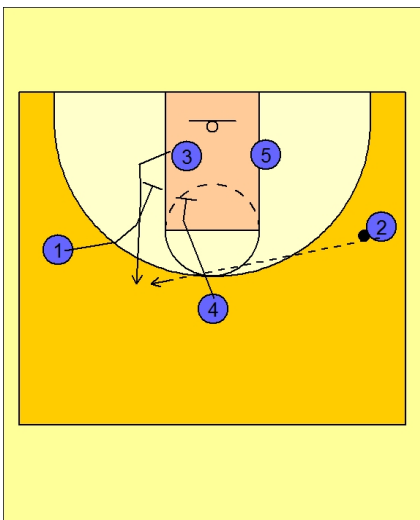


California Set Play vs. Man

If #3 does not get the ball, #4 will reverse the ball to #2 on the right wing.

When that happens, #3 turns around quickly and screens for #5 in the lane.

#2 looks to feed the ball inside to #5.



California Set Play vs. Man

If #5 does not get the ball, #1 and #4 are setting a double screen for #3.