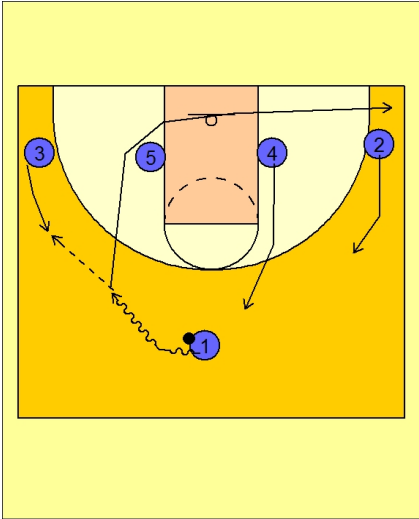




Set play vs. man (9)



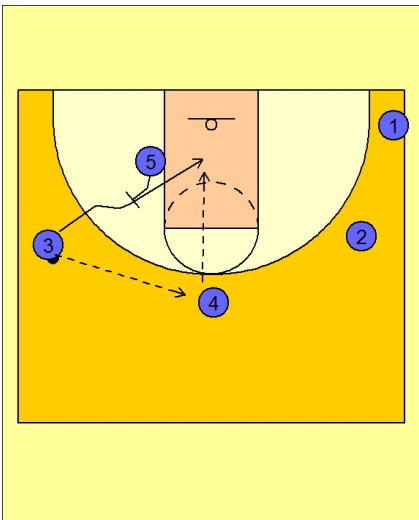
California Set Play vs. Man

1 - 4 low to begin the play.

#1 drives the ball to the left side of the floor.

#3 cuts up to receive the entry pass from #1.

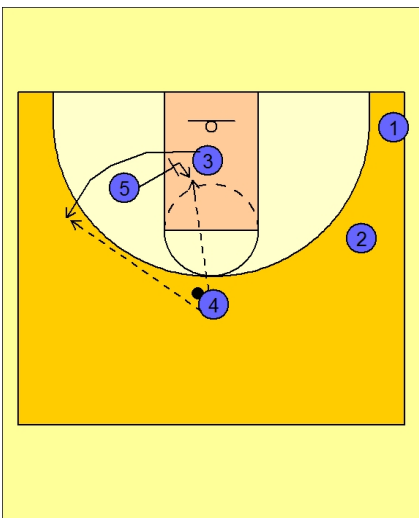
As this is happening, #4 sprints up to the top of the key area while #2 cuts up to the left wing to make room for #1 (who has passed to #3 and cut away to the opposite corner).



California Set Play vs. Man

#3 passes to #4 on top and then uses a back screen from #5 and cuts into the lane.

#4 looks to hit #3 if he is open.



California Set Play vs. Man

If #3 does not get the ball on his initial cut, #5 will quickly turn around and rescreen for #3 in the lane.

#3 breaks out to the wing while #5 screens and then opens up and seals in the paint.

#4 looks to hit either #3 or #5.



California Set Play vs. Man

If #3 gets the ball on the wing, #4 and #2 will set a double screen away for #1.

