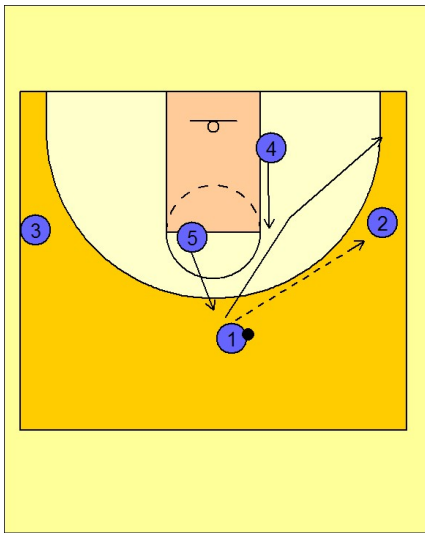


# Cincinnati

## Set play (10)

1

Cincinnati Set Play

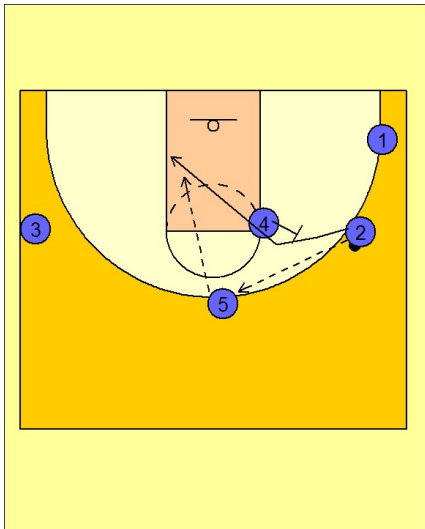


#1 enters to #2 on the right wing and cuts through to the right corner area.

#5 steps out to the top of the key while #4 flashes to the ft line right elbow area.

2

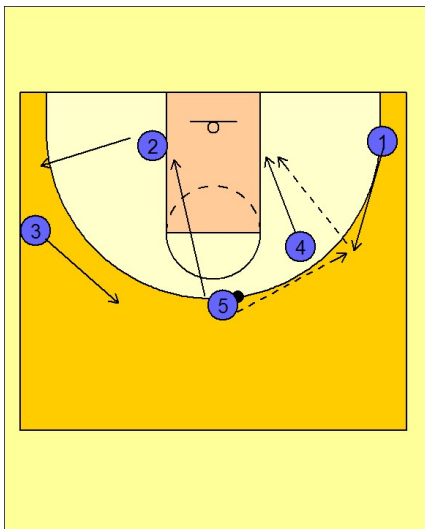
Cincinnati Set Play



#2 reverses the ball to #5 on top and cuts over the top of the screen by #4. #5 can look to hit #2.

3

Cincinnati Set Play



#4 then rolls to the right low block area while #1 moves up to receive the pass from #5 on the right wing. #1 will look to hit #4 on the right low block. #5 passes to #1 and then cuts to the opposite low block while #3 slides up to the top and #2 breaks out to the left wing area.