

# Cincinnati

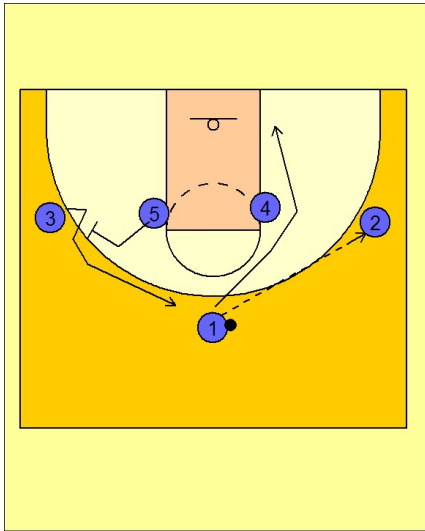
## Set play (12)

1

Cincinnati Set Play

1 - 4 high set to begin.

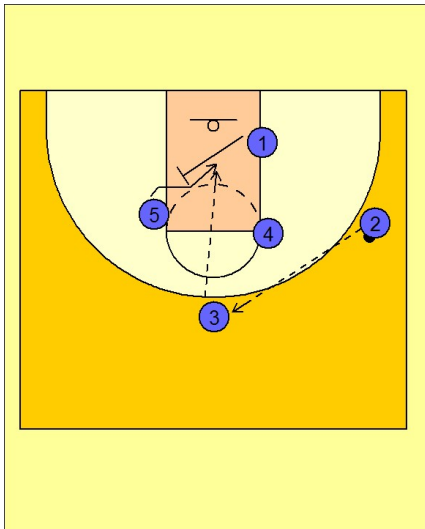
#1 enters to #2 on the right wing and cuts down to the ball side low block area. #5 screens for #3 on the left wing and #3 cuts to the top of the key.



2

Cincinnati Set Play

#2 reverses the ball to #3 on top. #1 then sets a back screen for #5 who cuts to the basket. #3 will look to make the post entry pass to #5.



3

Cincinnati Set Play

Another option Cincy uses on this play is for #5 to set a down screen for #1, trying to free him for an open jumper on the left wing. #1 will also look to make a post entry pass to #5 who has screened and cut back to the ball side low block.

