

Cincinnati

Set play (13)

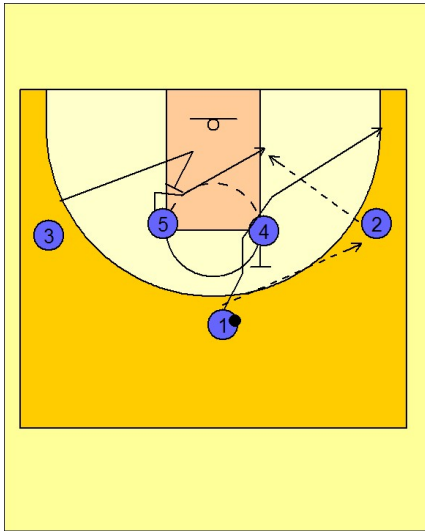
1

Cincinnati Set Play

1 - 4 high set to begin.

#1 enters to #2 on the right wing and cuts through off a back screen from #4 to the ball side corner area.

#3 cuts into the lane and then out to set a back screen for #5 who cuts to the ball side low block area looking for the post entry pass from #2.



2

Cincinnati Set Play

If #5 is not open, #4 sets a ball screen for #2. As #2 drives over the top of the screen, #4 rolls to the basket off of a back screen from #5. #2 can look to make the direct pass to #4 rolling or he can hit #3 on the left wing and he can make the post entry pass to #4.

