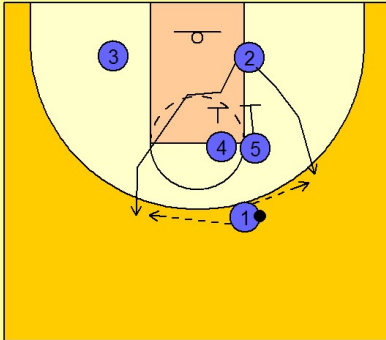


Cincinnati

Set play (2)

1

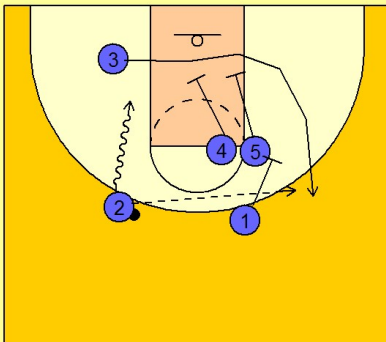
Cincinnati Set Play



(#4) and (#5) set a double screen for (#2) on the block. (#2) reads the defense and breaks up around either side of the double screen. (#1) will enter the ball to (#2).

2

Cincinnati Set Play



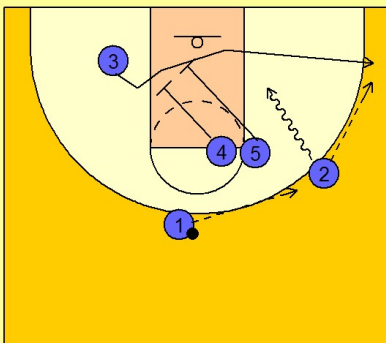
We will assume in this diagram that (#20 broke up to the middle area for the entry pass from (#1).

After (#2) receives the ball, (#3) clears out around a double screen from (#4) and (#5) and another screen from (#1) looking for the shot out top.

(#2) may wait to enter the ball for (#3) coming off of the screens, or he may elect to penetrate to the basket. His weakside defenders are being cleared out with (#3) leaving and the rest of the defenders are being occupied by the screening action.

3

Cincinnati Set Play



If (#2) were to break out the other side of the double screen to start the play, (#4) and (#5) will double screen across for (#3).

(#2) may also look to penetrate again as the double screen is beginning.