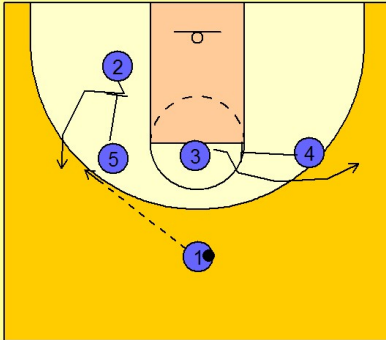


Cincinnati

Set play (6)

1

Cincinnati Set Play vs. Man

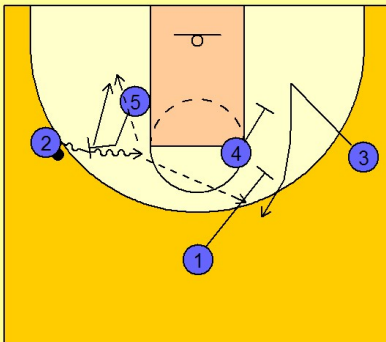


(#5) down screens for (#2) and (#4) screens in for (#3) popping to the wing.

(#1) enters the ball to (#2).

2

Cincinnati Set Play vs. Man



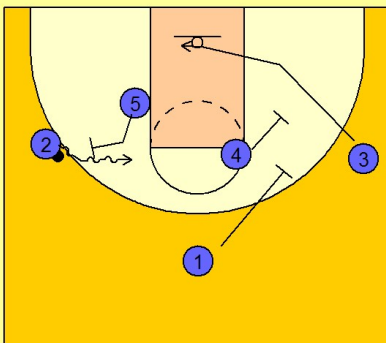
Once (#2) has the ball, (#4) and (#1) screen away for (#3) on the wing.

(#5) steps out and executes a pick and roll with (#2).

(#2) can look to score himself, hit (#5) rolling to the basket or hit (#3) coming off the double screen.

3

Cincinnati Set Play vs. Man



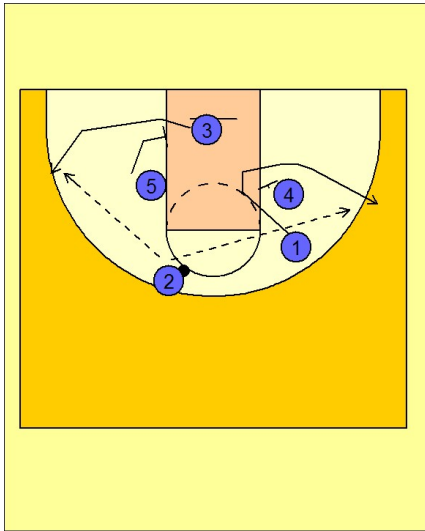
Another option out of this set is for (#3) to cut low across the lane instead of coming off the double screen set by (#4) and (#1).

Cincinnati

Set play (6)

4

Cincinnati Set Play vs. Man



When this happens, (#5) rolls to the basket and screens for (#3) popping out to the corner / wing area for a shot. (#1) cuts under (#4) and out to the other wing area.

(#2) can look to score himself coming off the ball screen from (#5) or he can hit (#1) on the right wing or (#3) on the left wing.