

Cincinnati

Set play (8)

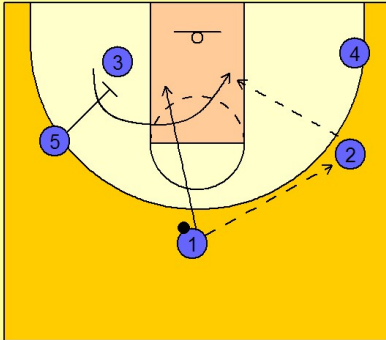
1

Cincinnati Set Play vs. Man Defense

5 spread out to begin.

#1 enters to the right wing player #2. #5 down screens for #3 while #1 cuts into the middle of the lane.

#3 comes off of #5's down screen and curls over the top of #5 and over #1 as well looking for the quick hitting entry pass from #2.



2

Cincinnati Set Play vs. Man Defense

If #3 is not open, #2 will hit #4 in the right corner. #2 will move into the lane near the FT line area and set a screen for #5. #5 will curl over the top looking for the post entry pass from #4. #3 has already cleared out after not getting the ball and #1 has popped out to the opposite side.

#2 pops back out to center the ball if #5 is not open.

