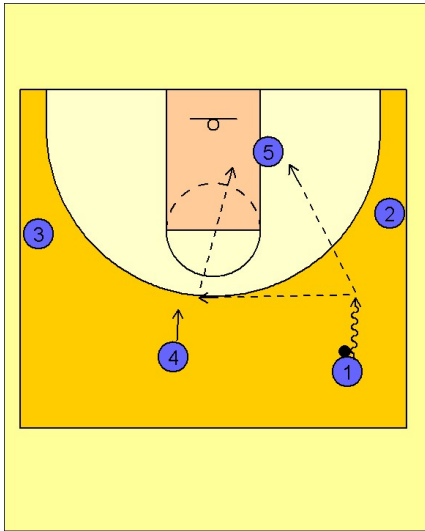


# Creighton

## Early offense (1)

1

### Creighton Early Offense

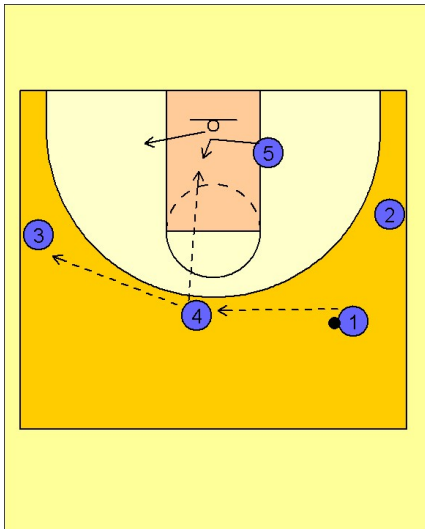


Creighton uses a sideline break with the post man running hard to the ball side block. #1's first look is to #2 and #3 spotting up on the wings then inside to #5 posting up.

If #5 is not open, #1 will look to reverse the ball to #4 trailing. #4 will look to make the high / low entry pass to #5 ducking in the lane.

2

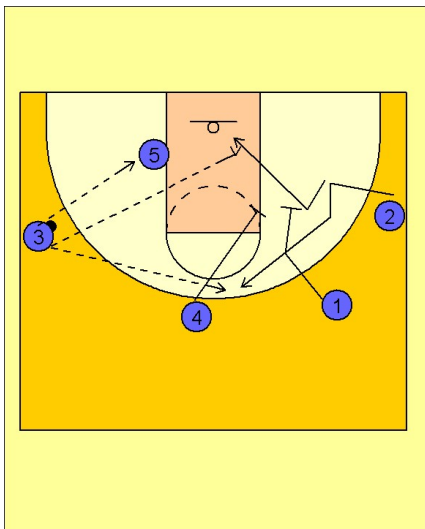
### Creighton Early Offense



If #5 is not open, #4 will reverse the ball to #3 on the left wing with #5 following the ball across the lane.

3

### Creighton Early Offense



Once #3 has the ball, #5 will post up hard on the ball side block while #4 and #1 set a double screen away for #2 on the right wing. This action takes away any inside help the defenders guarding #4, #1 or #2 might have thought of giving.

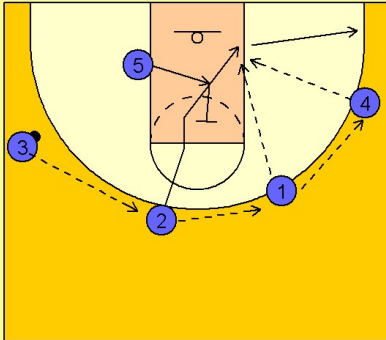
#3 either feeds the post alone on the block or looks to hit #2 coming off high or low from the double screen set by #4 and #1.

# Creighton

## Early offense (1)

4

### Creighton Early Offense



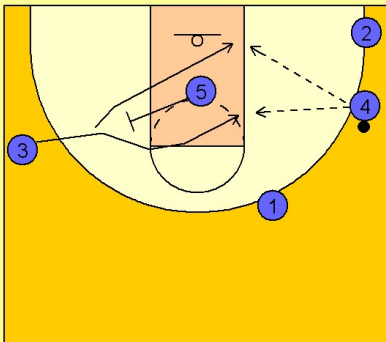
We will assume #5 did not get the ball and #3 had to pass it to #2 on top. #2 then reverses the ball to #1 who passes to #4 on the right wing.

#5 follows the ball across the middle of the lane and then steps up to set a back screen for #2.

#1 or #4 looks to hit #2 cutting to the basket. If #2 does not get the ball, he cuts to the ball side corner.

5

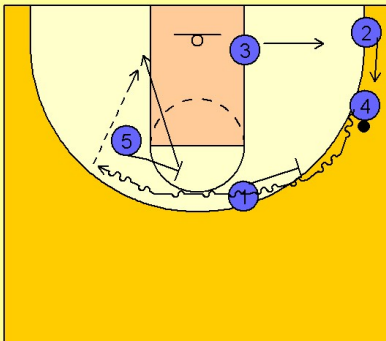
### Creighton Early Offense



#5 then turns around and sets a screen for #3 on the left wing area. #3 cuts high or low off the screen coming to the ball side lane area. #4 looks to hit #3 on the blocks or in the high post area.

6

### Creighton Early Offense



If that is not available, Creighton likes to set ball screens on the perimeter, often times a double ball screen.

Here we see #4 taking the ball across the top getting a ball screen from #1 and #5. As #4 comes off the ball screen from #5, #5 rolls to the open basketball area looking for the pass from #4.

#3 has cleared out to the perimeter giving #5 room to work inside.