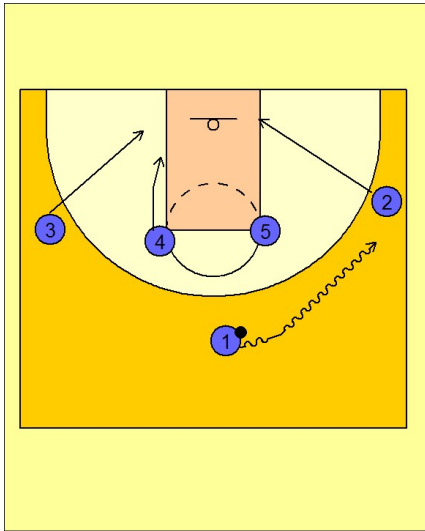


Creighton

Set play vs. man (2)

1



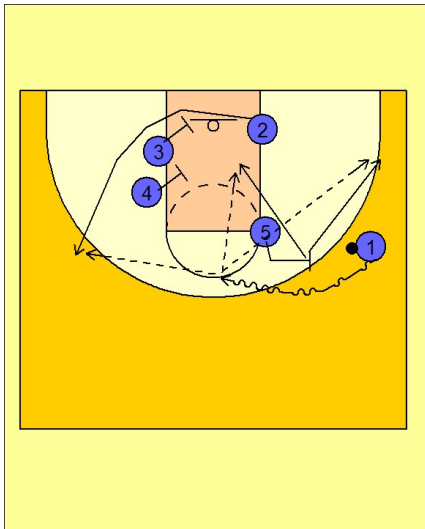
Creighton Set Play vs. Man Defense

1 - 4 high to begin.

#1 dribbles at #2 on the right wing, pushing him down to the right low block area.

#3 and #4 slide down to the left low block area.

2



Creighton Set Play vs. Man Defense

Once #1 gets to the right wing, #5 steps out and executes a pick and roll with #1 on the right wing.

As #1 comes over the top of the screen, #2 comes off the double screen or double staggered screen from #3 and #4. #1 can look to drive and score, hit #2 for the shot, or hit #5 popping out or rolling to the basket, depending on his range.