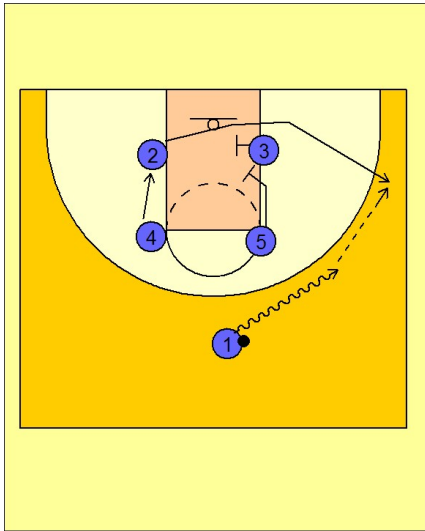


# Creighton

## Set play vs. man (3)

1



Creighton Set Play vs. Man Defense

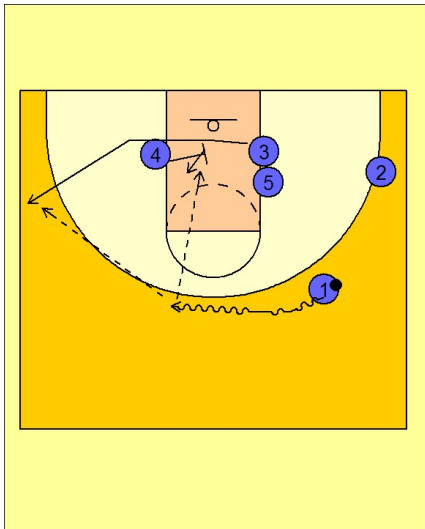
Box set to begin.

#1 drives the ball to the right wing area.

#5 moves down and sets a double screen with #3.

#4 moves down to the left low block while #2 comes off the double screen from #3 and #5, looking to get an open shot on the right wing / corner area.

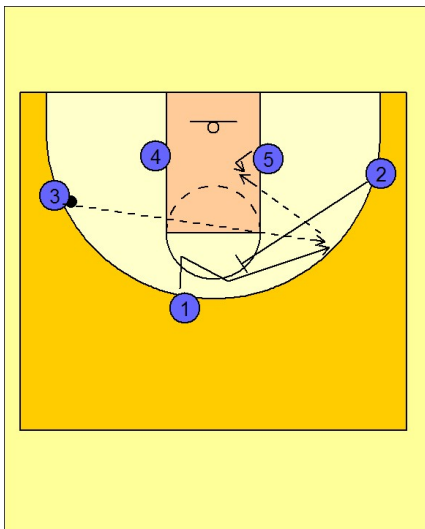
2



Creighton Set Play vs. Man Defense

If #2 is not open, #1 keeps his dribble alive and brings the ball back to the left side of the floor. As this is happening, #4 sets a screen in the lane for #3, who tries to get open on the left wing / corner area. #1 will make the pass to either #3 on the left wing or #4 posting up after screening.

3



Creighton Set Play vs. Man Defense

If #3 gets the ball, #2 sets a back screen on #1's defender. #1 fades to the back side of the floor for the potential skip pass from #3.