

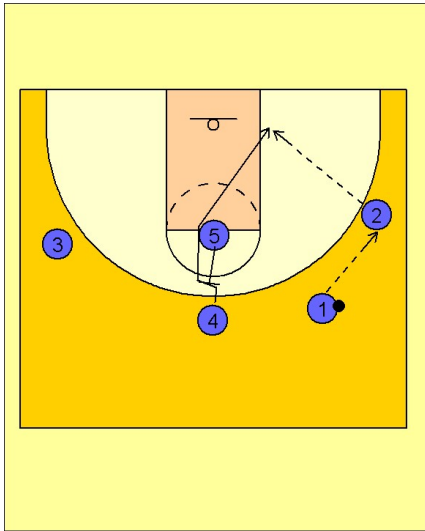
# Creighton

## Set play vs. man (4)

1

### Creighton Set Play vs. Man Defense

#1 enters the ball to #2 on the right wing. #5 back screens for #4. #2 looks for #4 cutting to the basket on the right low block area.

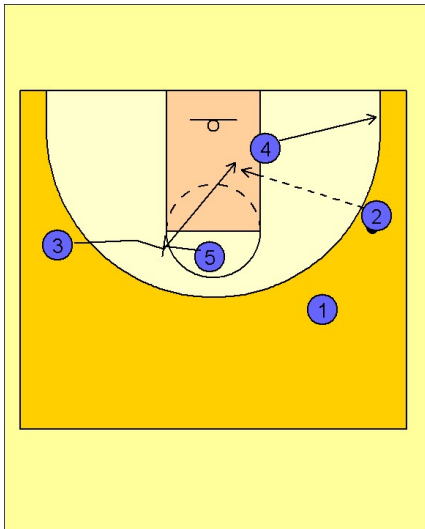


2

### Creighton Set Play vs. Man Defense

If #4 does not receive the ball he continues his cut out to the right corner.

#5 now sets a back screen for #3 on the left wing. #3 cuts over the top of the screen from #5 and down the lane looking for the pass from #2.

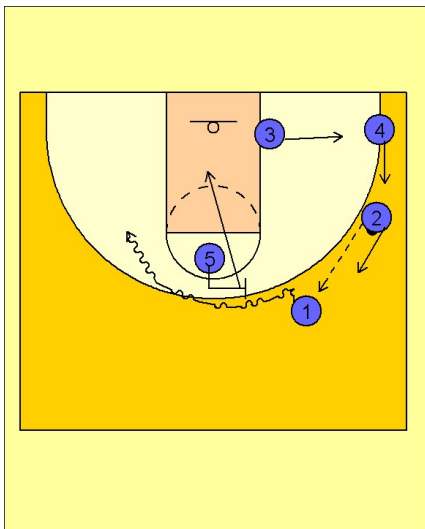


3

### Creighton Set Play vs. Man Defense

If #3 does not receive the ball he steps out to the right corner. #2 then passes the ball to #1 on top and #5 sets a ball screen for #1. With the left side of the floor cleared out, #1 drives over the top of the screen looking to get in the lane and score. #5 rolls to the basket looking for #1 to dump the ball down to him.

As this is happening, #2 and #4 and #3 are all sliding up the right side of the court for spacing and floor balance.

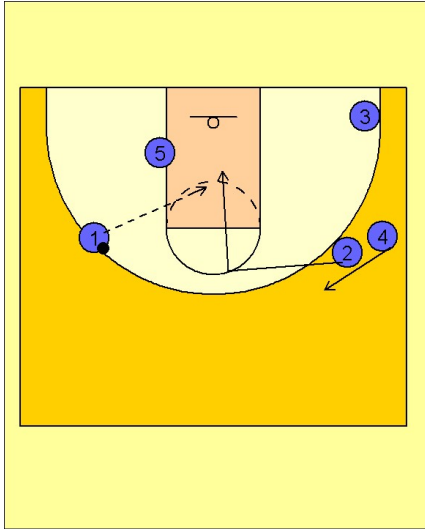


# Creighton

## Set play vs. man (4)

4

### Creighton Set Play vs. Man Defense



If #1 does not score or hit #5 with the ball, #2 is cutting to the top of the key looking for the pass from #1. #2 makes a good hard cut to the basket to receive the back door pass from #1.