

Creighton

Set play vs. man (6)

1

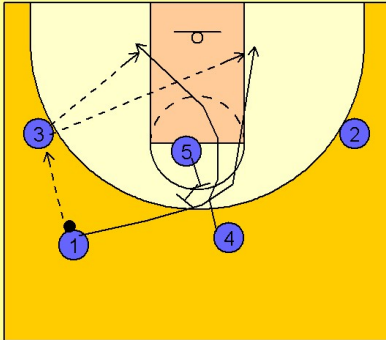
Creighton Set Play vs. Man Defense

2 - 3 high alignment to begin.

#1 enters to #3 on the left wing (obviously can be run to either side).

Once #3 has the ball, #4 cuts to the ball side block off of a back screen from #5 near the top of the key. #1 follows quickly behind #4 getting a back screen from #5 as well. #1 cuts to the back side low block area.

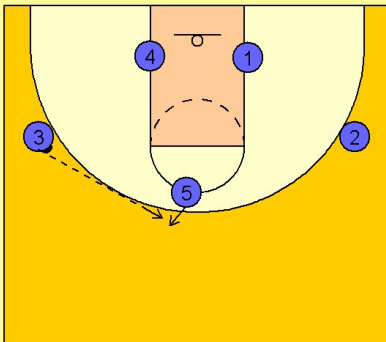
#3 can look quickly inside to the cutting #4 or #1 man.



2

Creighton Set Play vs. Man Defense

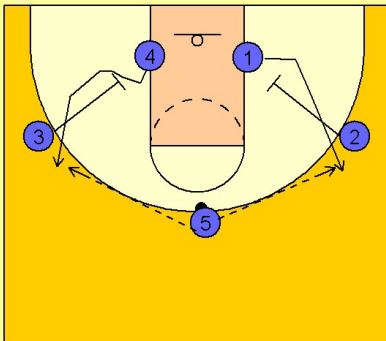
After #4 and #1 cuts through, #5 steps out and receives the pass from #3.



3

Creighton Set Play vs. Man Defense

Once #5 has the ball on top, #3 and #2 down screen for #4 and #1 on the low blocks. #5 looks to hit either wing player coming off the down screen.



Creighton

Set play vs. man (6)

4

Creighton Set Play vs. Man Defense

We will assume #5 made the wing entry pass to #1 on the right wing.

#2 would then turn and screen across for #3 trying to free him on the right low block area. #5 will set a down screen for the screener #2, trying to get him open for a shot on the perimeter.

