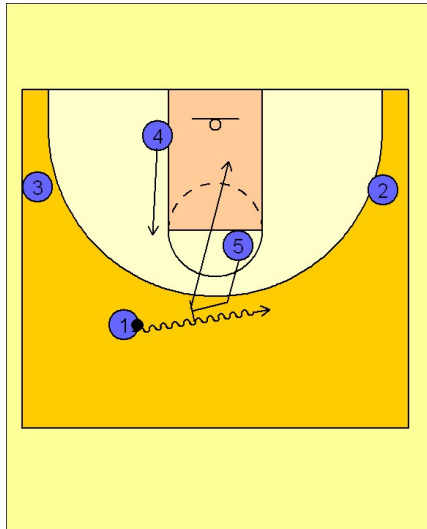


Duke

Early offense (2)

1

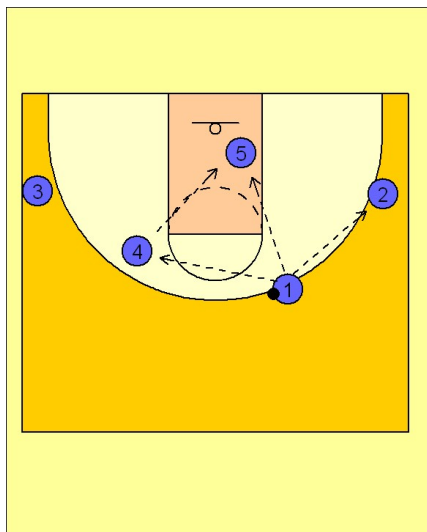


Duke Early Offense

(#1) gets a ball screen for (#5) at the top of the key area.

(#4) slides up to give (#5) room to work after rolling off of the ball screen.

2



Duke Early Offense

(#1) drives it hard off the ball screen looking for dribble penetration into the paint for the possible kick out to (#2) or the post pass to (#5) either directly or by passing to the (#4) man then into the post for the high / low entry.