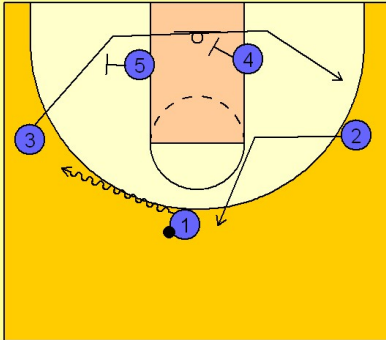


# Duke

## Early offense (3)

1

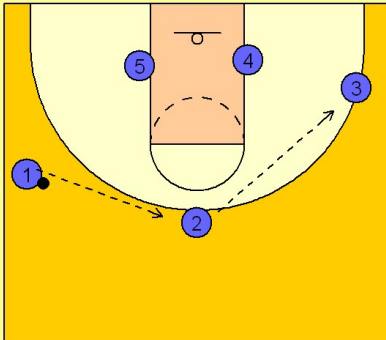
### Duke Early Offense



(#1) dribble clears (#3) from the wing area.  
(#3) gets screens along the baseline from (#4 and #5).  
(#2) breaks to the FT line area and then v-cuts up to the top of the key area.

2

### Duke Early Offense



(#1) dribble clears (#3) from the wing area.  
(#3) gets screens along the baseline from (#4 and #5).  
(#2) breaks to the FT line area and then v-cuts up to the top of the key area.