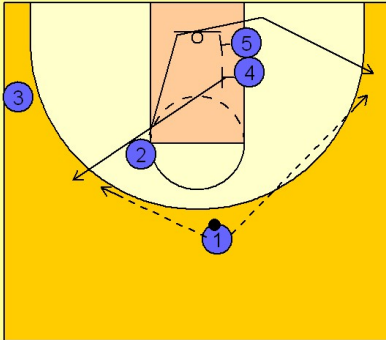


Duke

Early offense (4)

1

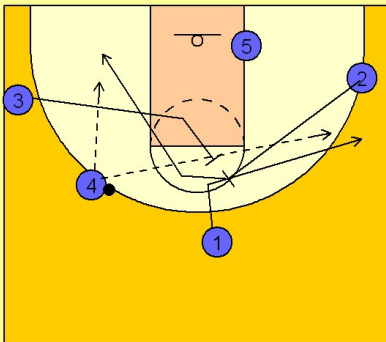
Duke Early Offense



(#2) comes off of a double screen set by (#4 and #5) to the wing.
 (#1) can hit (#2) for the shot if he is open, if not, he will enter the ball to (#4) who has popped out to receive the pass from (#1) after screening for (#2).

2

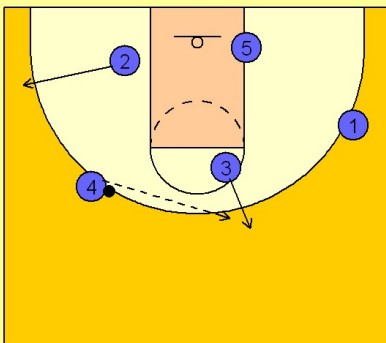
Duke Early Offense



After (#1) enters the ball to (#4), he receives a back screen from (#2) and then fades to the back side wing area for a potential pass and shot.
 (#3) may step in and set a back screen for (#2) who has just set the pick on (#1's) defender, creating good "pick the picker" action. (#3) does not have to set this screen. In any event, (#2) will break to the basket looking for a pass from (#4).

3

Duke Early Offense



If (#2) is not open, he will enter the ball to (#3) stepping out after the back screen. They will run their motion offense from here.