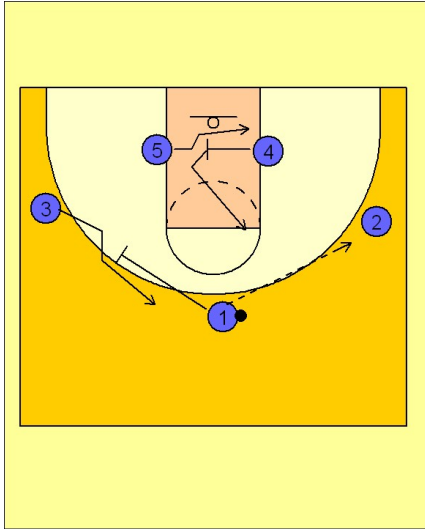


# Duke

## Half court offense (1)

1

### Duke Half Court Offense (vs. man and zone)



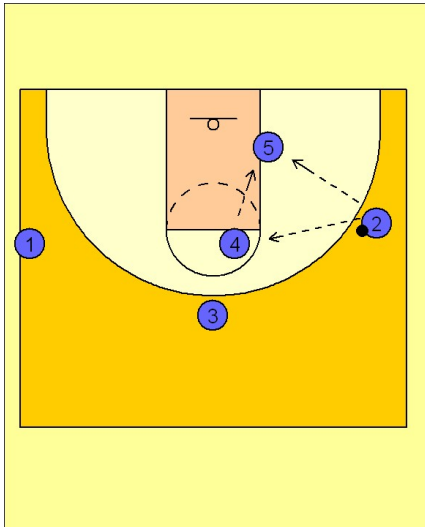
Editors note: Duke uses a 3 out 2 in alignment for their motion offense. They are very good at setting and using screens, dribble penetration, spacing, ball movement and man movement. Certainly one of the best in the country at it. They have great players who are taught how to run this offense with attention to detail. Their post players have great footwork and use their bodies well to get good post position. They are great interior and exterior passers who are extremely unselfish. They will use this motion offense vs. man and zone defense.

(#1) can enter to either wing and will look to screen away for ball reversal and floor balance.

(#4 and #5) are working in the post, setting cross screens for each other and working hard for good post position at the low and high post.

2

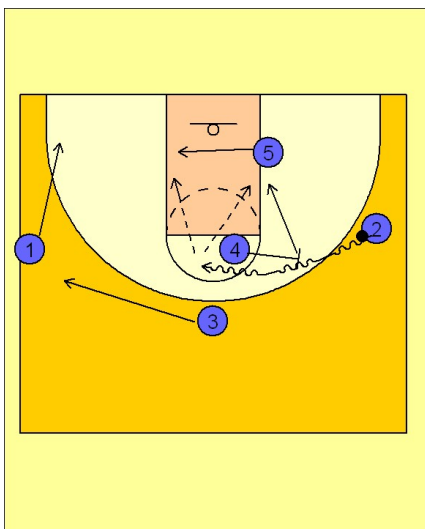
### Duke Half Court Offense



(#2) has the option to directly enter the ball into the post man (#5) or can look to use the high / low post entry if (#5) is being fronted. Duke does a great job of post passing and their post players do an even better job of making themselves available for the pass.

3

### Duke Half Court Offense



(#4) has the option at anytime to step out of the high post area and set a ball screen for the wing player, in this diagram (#3).

(#3) looks to drive it to the FT line area looking for the kick out pass to either (#1 or #3) or can dump it into the post men (#5) sliding over or (#4) rolling to the basket after the ball screen.