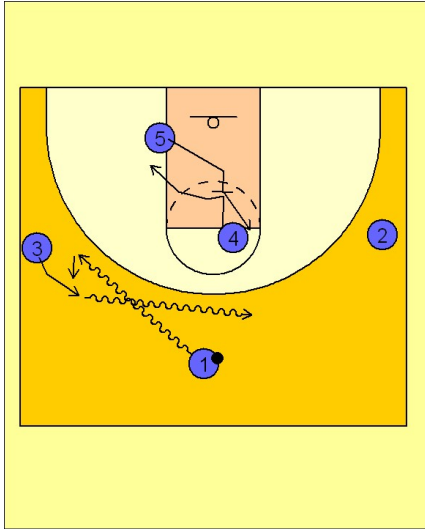


Duke

Half court offense (2)

1



Duke Half Court Offense

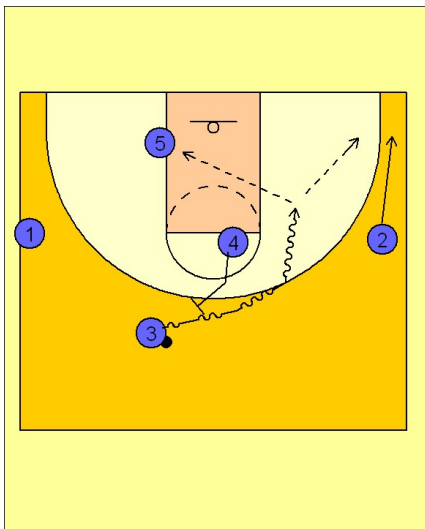
This is one of Duke's late game alignments when they want to run some clock and spread the floor.

(#4) and (#5) will work together in the low and high post areas, setting back screens for each other trying to free them for an open post pass to the block or after back screening, popping out for a pass from one of the perimeter players.

(#1), (#2) and (#3) will dribble weave, cut and replace or cut through and replace on the perimeter. Here we see (#1) and (#3) using the dribble hand off on the perimeter.

It is crucial for the success of this late game offense that all the players be aware of high and wide spacing, creating great driving opportunities or back door lay-ups.

2



Duke Half Court Offense

At anytime, the high post players (in this diagram (#4), can step out and ball screen for the perimeter players either on top or on the wing. High and wide spacing will create great driving opportunities off the ball screen and could free your good shooters from the help and recover situations you are creating.