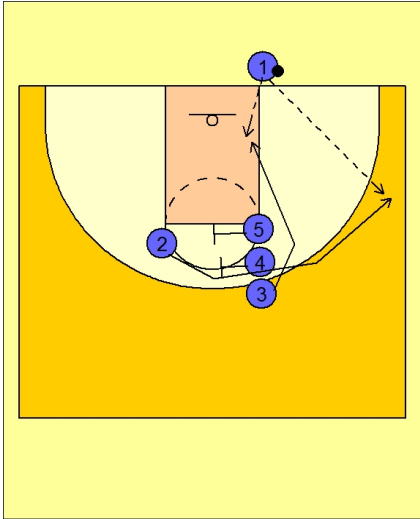




**Ob under vs. man (15)**



**Duke OB Under vs. Man Defense**

Another popular alignment for Duke on the OB.

#3 starts the play by cutting hard to the basketball. As #3 cuts to the rim, #4 and #5 set a double screen for #2.

#1 looks to hit #3 first and then #2 for the open jumper on the wing / corner area.