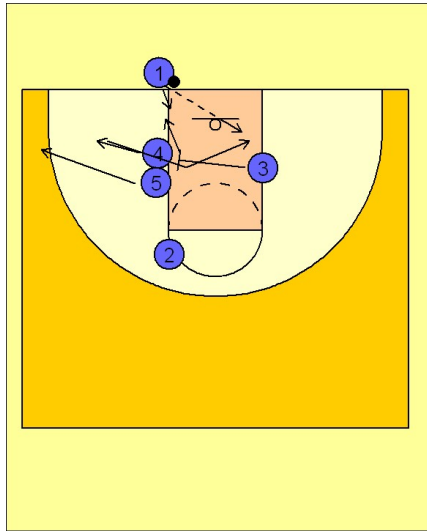


# Duke

## Ob under (10)

1



Duke OB Under vs. Man

This is kind of a "quick hitter" out of bounds play for Duke.

(#4) and (#5) start to break to the ball side corner. (#4) stops short and cuts back to the basket off of a back screen from (#3). (#1) will look to lob it into (#4) or hit (#3) stepping in after the back screen.