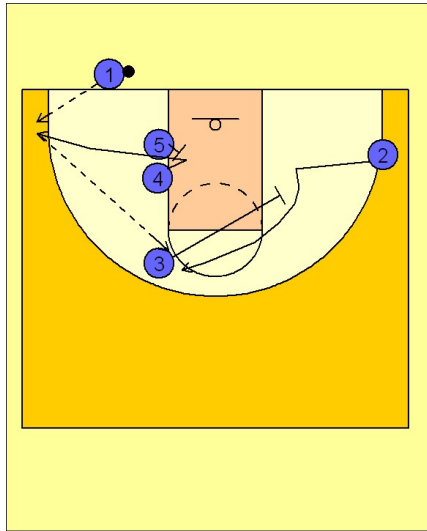


Duke

Ob under (11)

1

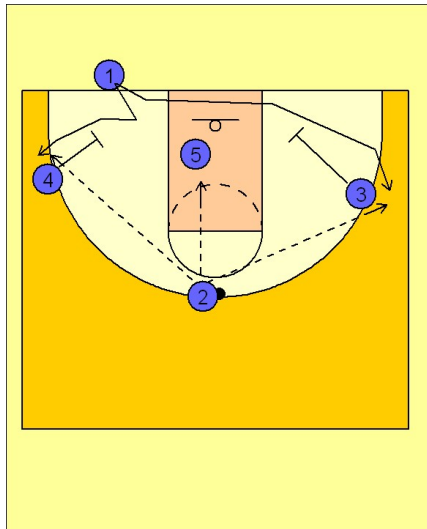


Duke OB Under vs. Man

(#4) v-cuts out to the ball side corner off of a screen by (#5). (#3) screens away for (#2).

(#4) catches the entry pass from (#1) and passes to (#2) at the top.

2



Duke OB Under vs. Man

(#2) can look for the shot himself if he is open, or he can look at (#5) isolated in the post. (#1) comes out to either side off the down screen from (#4) or (#3).