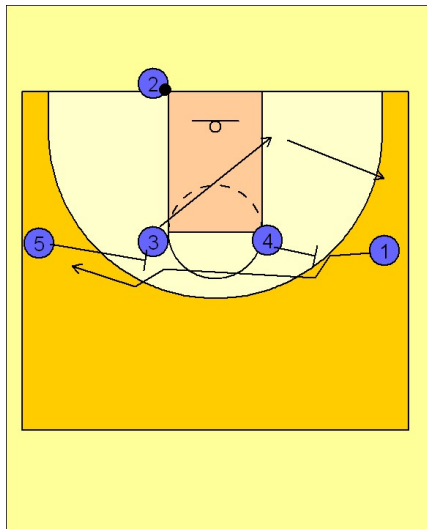


# Duke

## Ob under (2)

1



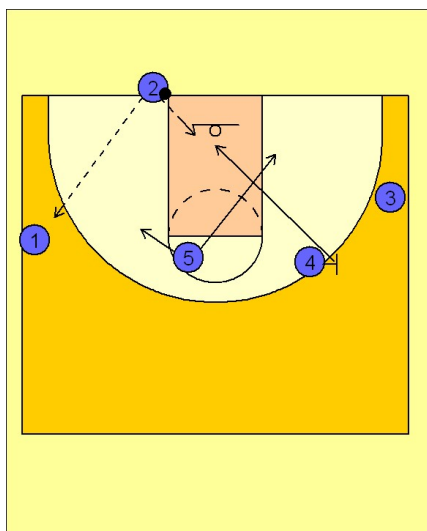
Duke OB Under

1 - 4 high set.

(#3) cuts away from the ball to the opposite block and then out to the other side of the floor.

(#4 and #5) set cross screens for (#1) breaking to the ball side wing.

2



Duke OB Under

(#2) has the option to enter the ball to (#1) or (#4 and #5) rolling to the basket off of the screens they set for (#1).