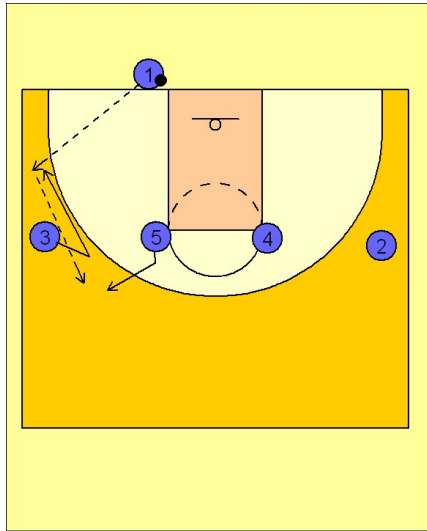


Duke

Ob under (3)

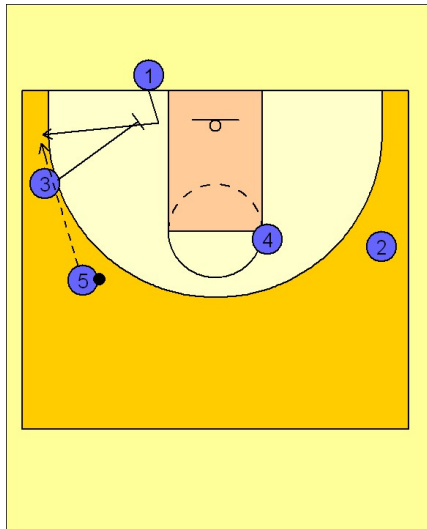
1



Duke OB Under

(#3) v-cuts to get open for an entry pass to the wing area.
(#5) breaks to the top for a pass from (#3)

2



Duke OB Under

Once (#5) has the ball, (#1) steps inbounds looking for a screen from (#3) and a potential shot from the corner.

Certainly, your inbounder needs to be a good outside shooter for this play to be effective. Not a priority as mentioned before that (#1) get a shot. Duke is more concerned about getting the ball in without a turnover, then running great half court offense.