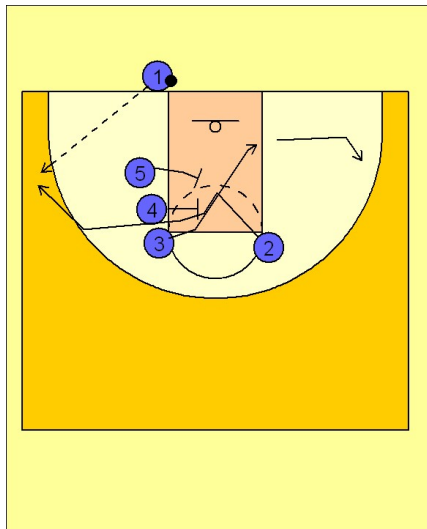


Duke

Ob under (7)

1



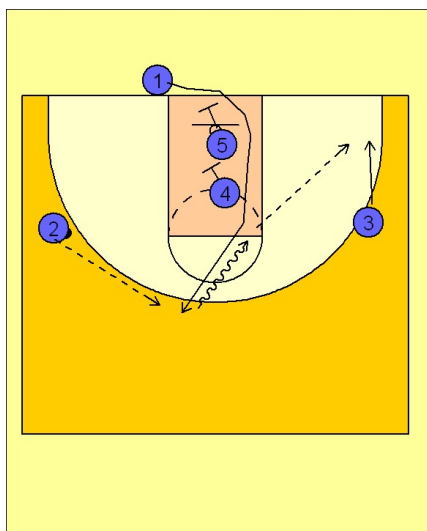
Duke OB Under vs. Man

(#3) breaks to the block opposite the ball and then back out to the wing.

(#4) and (#5) set a double screen for (#2) breaking to the ball side wing for an entry pass and shot.

(#1) enters the ball to (#2).

2



Duke OB Under vs. Man

(#5) and (#4) then set staggered screens in the paint for (#1) stepping in and breaking up the middle of the floor for the shot, drive, or drive and pass to (#3).