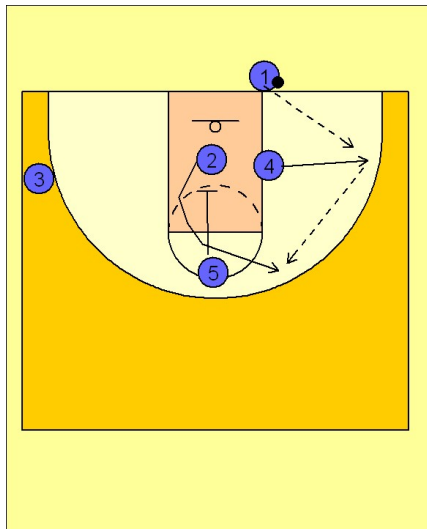


# Duke

## Ob under (9)

1

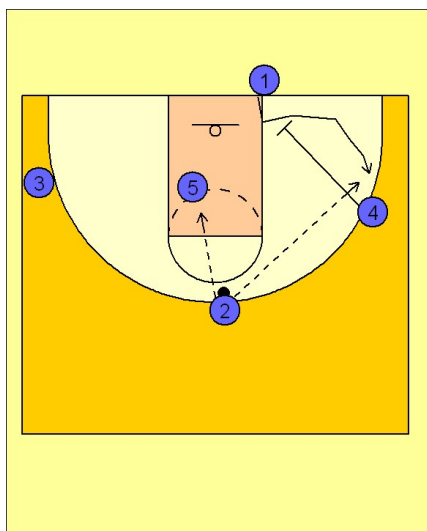


Duke OB Under vs. Man

(#4) breaks to the ball side corner. (#1) enters to (#4).

As the ball is being passed to (#4), (#5) sets a down screen for (#2) to receive the pass at the top of the key area for a potential shot.

2



Duke OB Under vs. Man

If (#2) does not have a shot, (#5) is isolated in the post and will work hard for post position and a pass from (#2). (#4) down screens for (#1) stepping in for a potential shot in the corner.