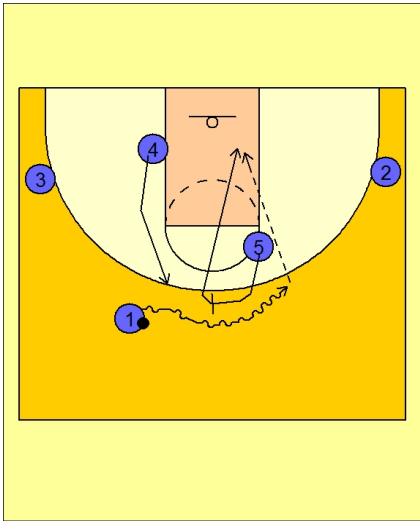




Quick hitter (18)

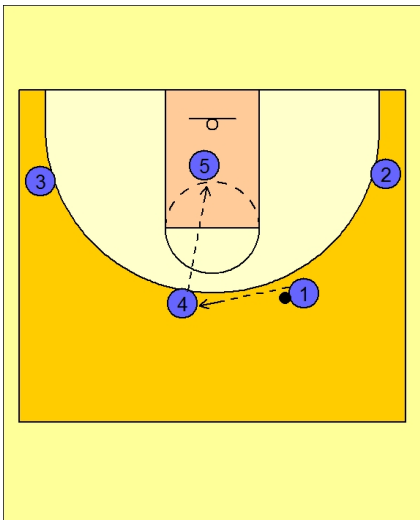


Duke Quick Hitter vs. Man Defense

This play is used by many teams with effective inside post players.

#5 ball screens for #1 on top.

#5 cuts to the rim after #1 comes off the ball screen. As #5 cuts to the rim, #4 takes his defender away from the rim by cutting up on top.



Duke Quick Hitter vs. Man Defense

If #1 cannot get the ball inside to #5 rolling, #1 will reverse the ball on top to #4 who will look to feed #5 sealing his defender in the paint.