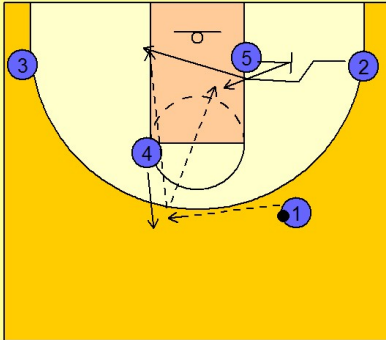


Duke

Quick hitter (14)

1

Duke Quick Hitter vs. Man Defense

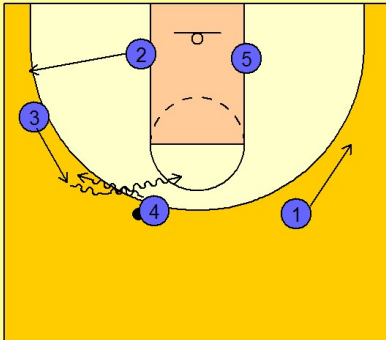


#4 steps out to receive the entry pass from #1. As #4 receives the pass, #5 sets a back screen for #2 on the right wing. #2 cuts over the top looking for the entry pass from #4. #5 now looks to duck in the lane after screening.

This quick hitter is especially effective in getting the ball inside to #5, because if the back screen is set effectively, #5's defender must open up and help on the cut across the lane by #2. This will give #5 the opportunity to seal his man in the lane for a good post entry pass opportunity.

2

Duke Quick Hitter vs. Man Defense



If the post entry pass is not available, #4 will look to execute a dribble hand-off with #3 on the left wing area. #2 steps out and #1 slides down for floor balance.]