

Duke

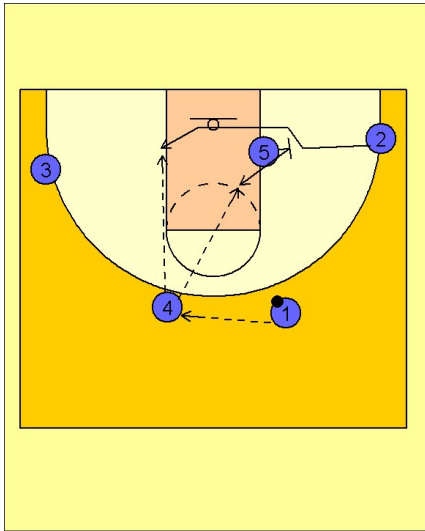
Quick hitter (16)

1

Duke Quick Hitter vs. Man Defense

It is rarely about the complexity of Duke's offensive diagrams, it is all about the execution.

Here #1 reverses the ball and the post player #5 screens for the shooter #2. #5 will seal after screening and look for good post position. #4 looks to pass to either #2 or #5.



2

Duke Quick Hitter vs. Man Defense

If neither option is open, #4 passes back to #1 while #5 screens for #2 breaking out to the ball side corner. #1 has the option to hit #2 in the corner or #5 sealing inside for post position.

