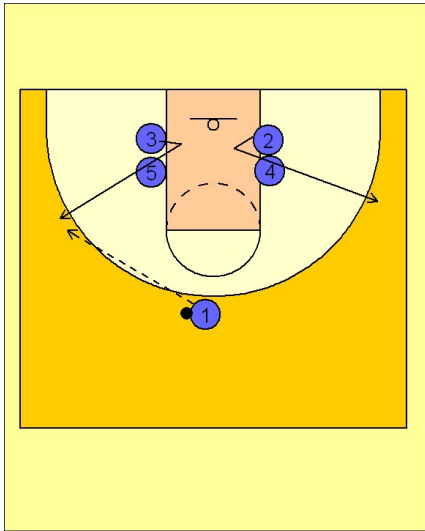


Duke

Quick hitter (2)

1



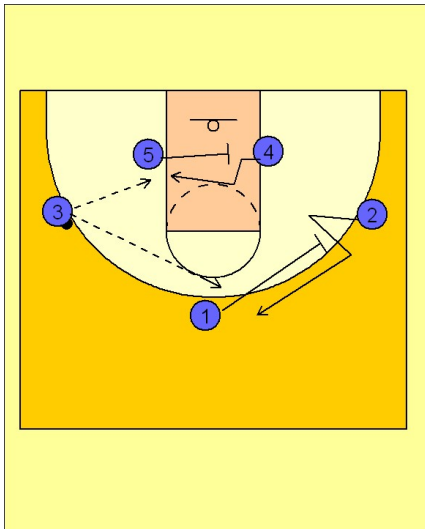
Duke Quick Hitter

Stack set on the blocks.

(#2 and #3) v-cut and pop out to the wings.

In this diagram, we will enter the ball to (#3).

2

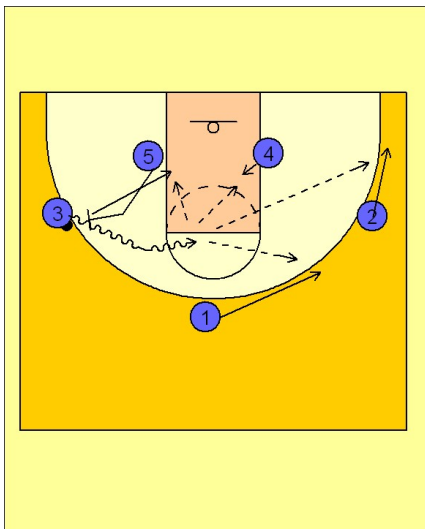


Duke Quick Hitter

(#1) has the option to stay on top or pick away for (#2).

(#5) has the option to screen away and bring (#4) to the ball side for a post up opportunity, or,
(#5) can set a ball screen for (#3) which you will see in the next diagram.

3



Duke Quick Hitter

As mentioned earlier, (#5) has the option to step out and set a ball screen for (#3) on the wing.

(#3) drives the ball to the FT line extended area looking for (#4) ducking in the post, (#5) rolling to the basket, or (#1 and #2) sliding over for the drive and kick pass.