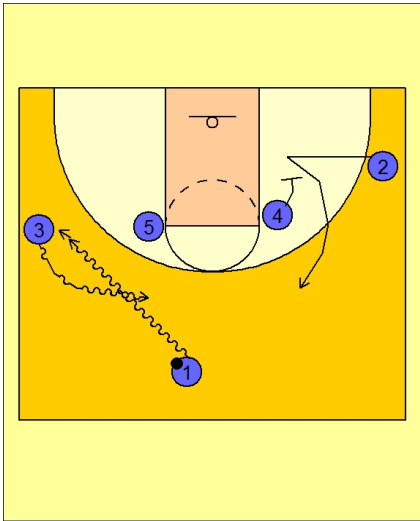




Set play (13)

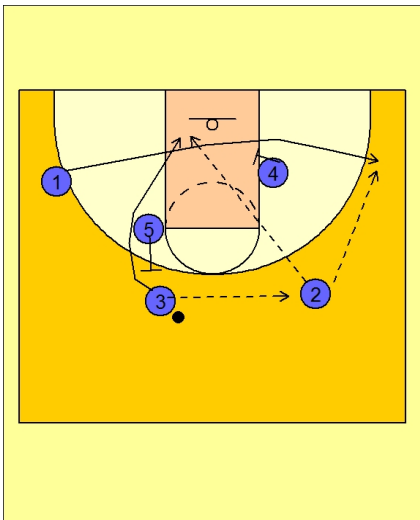


Duke Set Play vs. Man Defense

Duke ran this set to try and tie the game recently against Wake Forest. They missed the lob man wide open..but none the less pretty good set play with an option to get an open jump shot or a lob to the rim.

#1 drives the ball at #3 on the left wing. As that is happening, #4 is screening down for #2 on the opposite side of the floor.

#1 and #3 execute a dribble hand-off.



Duke Set Play vs. Man Defense

#3 takes the ball towards the middle and passes across to #2.

#1 is now cutting across the baseline off a screen from #4 on the right low block.

As soon as #3 passes to #2, #5 back screens for #3.

#2 can look to throw the lob to #3 or hit #1 in the right wing / corner area for the open jumper.