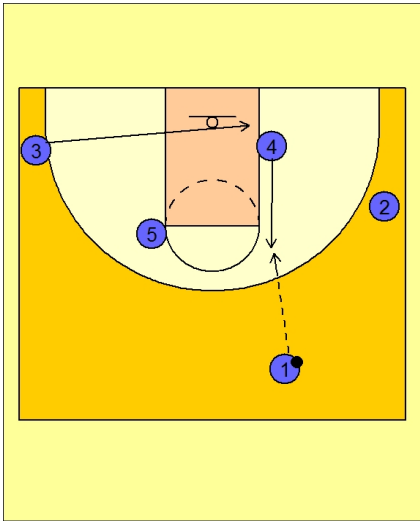




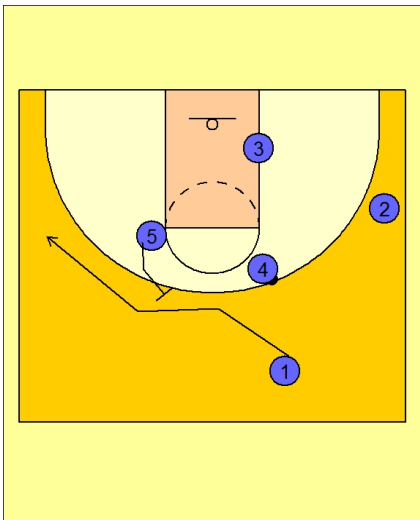
**Set play (14)**



**Duke Set Play vs. Man Defense**

#4 flashes to the high post to receive the entry pass from #4.

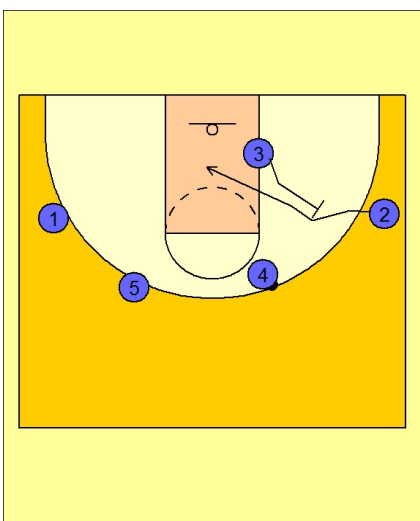
#3 cuts under the basket through to the right low block.



**Duke Set Play vs. Man Defense**

#5 back screens for #1.

#1 cuts over the screen to the left wing area.



**Duke Set Play vs. Man Defense**

#3 back screens for #2.

#2 cuts over the screen and into the paint.



**Duke Set Play vs. Man Defense**

#2 immediately back screens for #5.

#5 cuts over the screen and into the right low block area. #4 looks to get the ball inside to #5.

