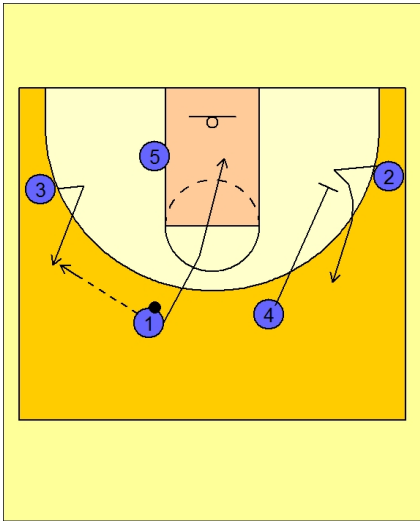




**Set play (16)**

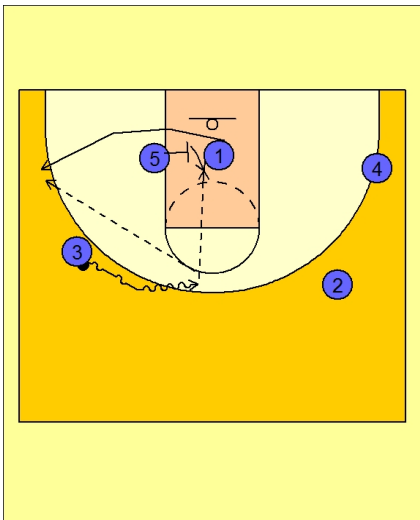


**Duke Set Play vs. Man Defense**

#1 enters the ball to #3 on the left wing.

#1 cuts under the basket.

#4 screens down for #2 on the right wing area.



**Duke Set Play vs. Man Defense**

#3 now drives the ball to the center of the floor.

#1 cuts off the screen in the lane from #5.

#5 uses this screening action to get better post position in the middle of the lane.

#3 now passes out to #1 for an open jumper in the left corner area or to #5 posting in the lane.