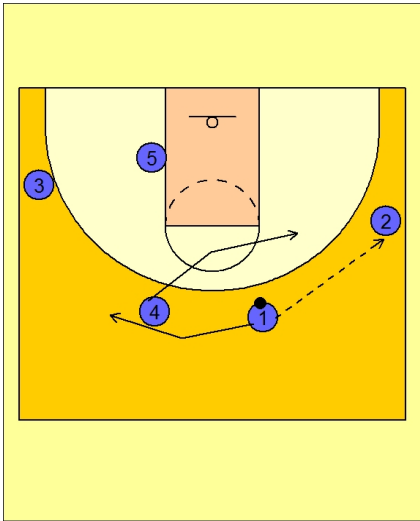




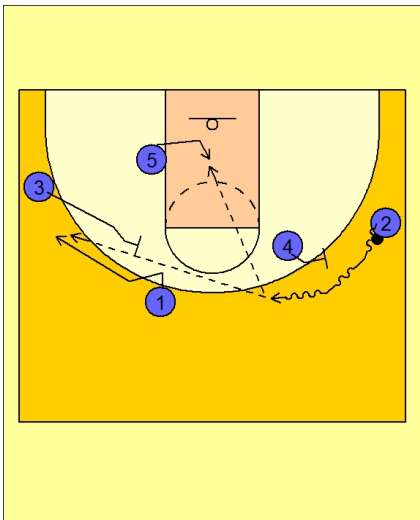
Set play (19)



Duke Set Play vs. Man Defense

#1 passes to #2 on the right wing.

#4 cuts toward the ball on the right wing.



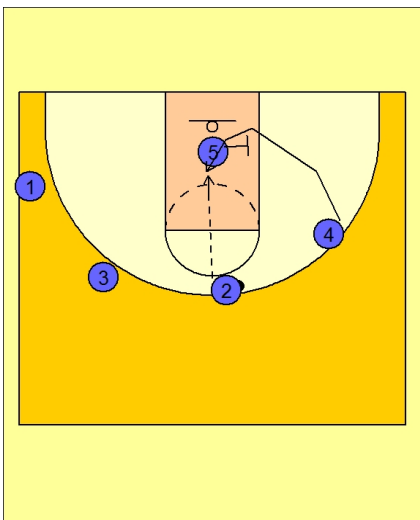
Duke Set Play vs. Man Defense

#2 now drives the ball off the ball screen from #4.

As this action is taking place, #3 sets a back screen, or flare screen, for #1.

#5 is ducking in the paint for the post up.

#2 has the option of scoring off the ball screen, passing over the top to #1, or getting the ball inside to #5.



Duke Set Play vs. Man Defense

If #5 does not get the ball, #4 is rolling in the paint after ball screening.

#4 now cuts under the screen from #5 and looks to catch and score in the mid-post area.