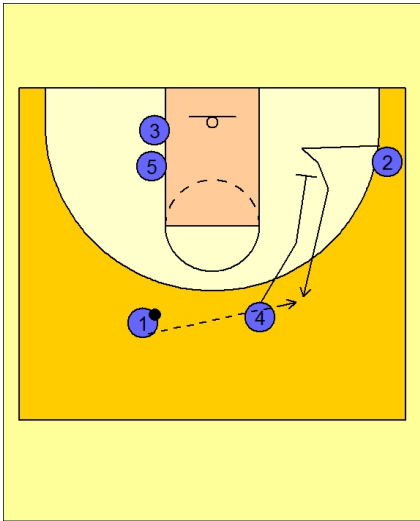




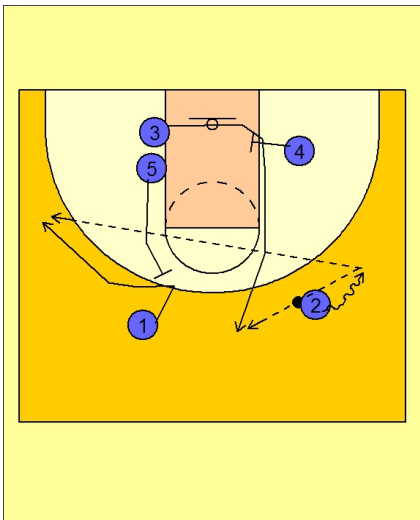
## Set play (20)



### Duke Set Play vs. Man Defense

#4 down screens for #2 on the right corner / wing area.

#3 and #5 are stacked up on the left low block.



### Duke Set Play vs. Man Defense

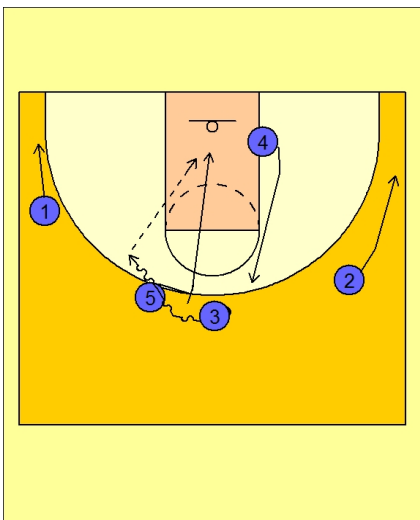
#2 takes the ball to the right side on the dribble.

#5 slides up and back screens for #1.

#3 cuts around the screen and up the middle of the floor on top.

#2 can skip the ball across the top to the left wing if he feels #1 is open for a jump shot.

Most often, #2 will pass to #3 at the top of the key.



### Duke Set Play vs. Man Defense

#5 now ball screens for #3.

#1 spots up in the corner while #3 drives over the top of the ball screen.

#5 rolls to the basket while #4 brings his defender up and out of the lane.

#3's first look is inside to #5.



**Duke Set Play vs. Man Defense**

If #5 is fronted, #3 will reverse the ball to #4 on top for the better passing angle inside to #5.

