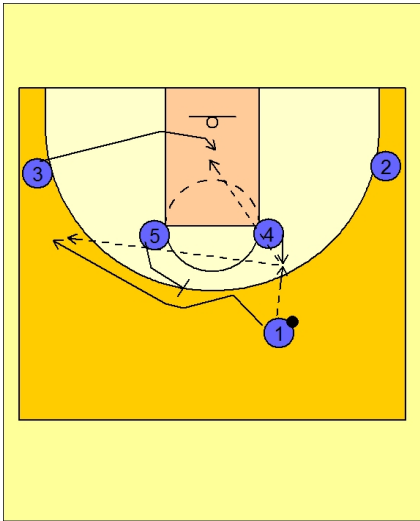




Set play (21)



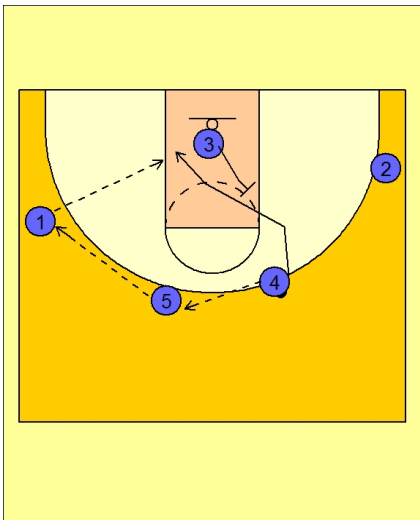
Duke Set Play vs. Man Defense

#1 enters the ball to #4 stepping out to receive the pass.

On the catch, #5 back screens for #1 who cuts over the top to the left wing area.

At the same time, #3 is cutting in the lane looking to seal his defender inside.

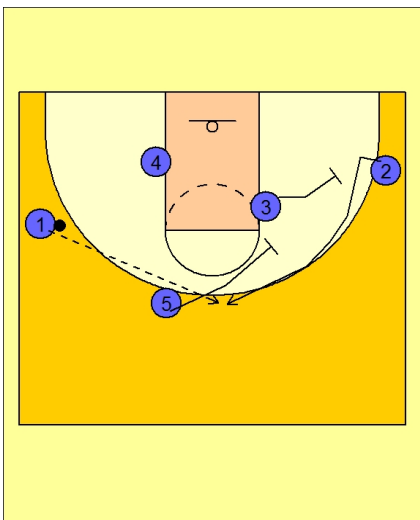
#4 looks inside to #3 or over the top to #1.



Duke Set Play vs. Man Defense

If nothing is available, #4 reverses the ball to #5 who passes to #1 on the left wing.

#3 now back screens for #4 who cuts to the ball side low block.



Duke Set Play vs. Man Defense

#3 and #5 now set a double staggered screen for the shooter, #2, in the right corner area.