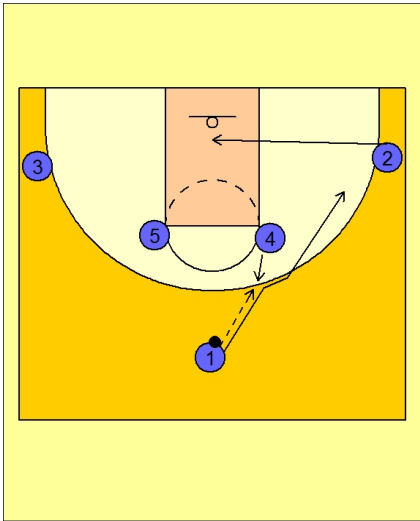




Set play (22)

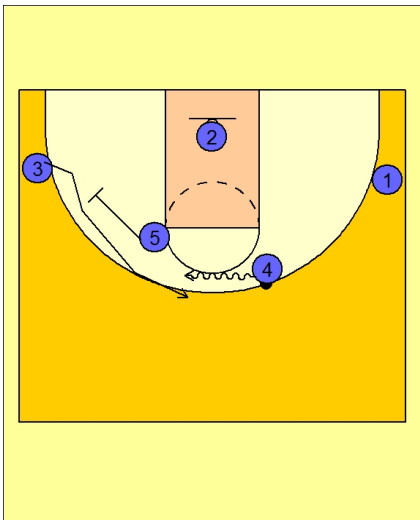


Duke Set Play vs. Man Defense

#1 enters the ball to #4 stepping out to receive the pass.

#2 cuts under the basket.

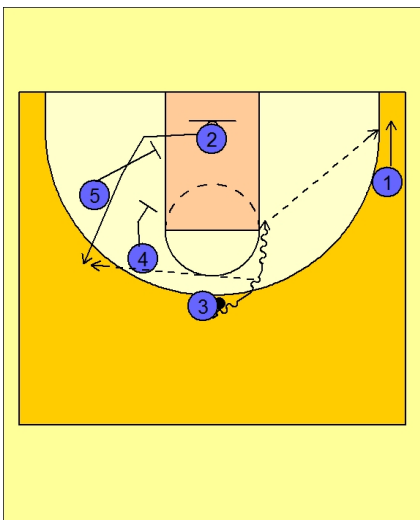
#1 cuts over the top of #4.



Duke Set Play vs. Man Defense

#4 now takes the ball on the dribble to the left side of the floor.

#3 cuts over a screen from #5 and then takes the hand-off from #4.



Duke Set Play vs. Man Defense

#3 looks to get in the paint and score if he can, or kick the ball out to #1 spotting up in the right corner.

#2 is also cutting off a double staggered screen from #5 and #4.

#3 has the option to pull up his dribble and look for #2 on the left side of the floor.